

MINOR INJURIES UNIT Clinical Quality Indicators

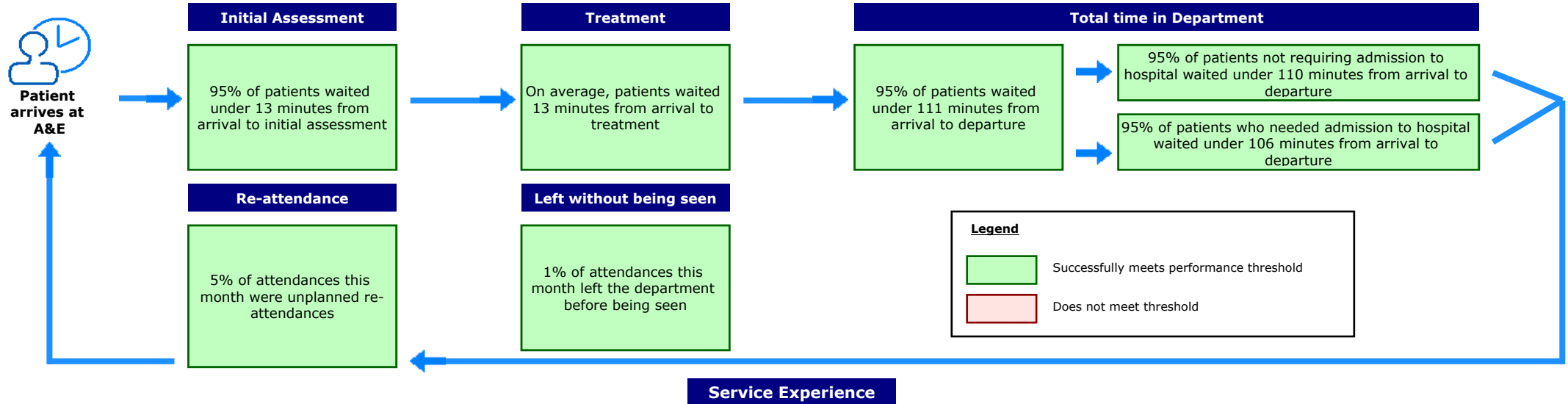
Overview

This dashboard presents a comprehensive and balanced view of the care delivered by our MINOR INJURIES UNIT department, and reflects the experience and safety of our patients and the effectiveness of the care they receive. These indicators will support patient expectations of high quality MINOR INJURIES UNIT services and allow our department to demonstrate our ambition to deliver excellent services which are continuously improving.

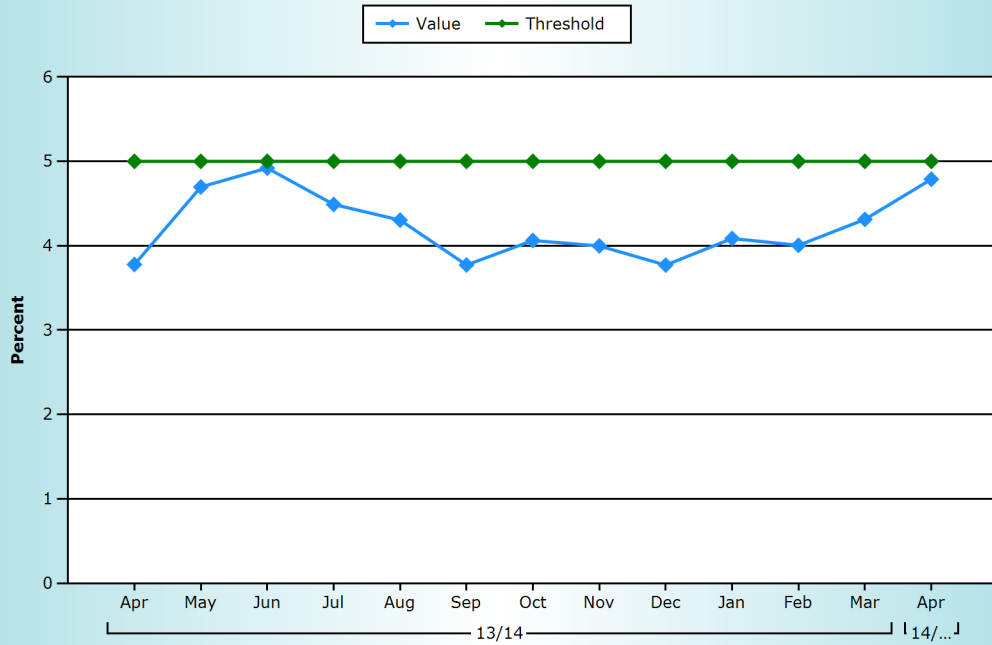
General Information

Northern General Hospital, Sheffield Teaching Hospitals	- Site name and organisation code
Type 1 (Major)	- Site type
Service Manager/Nurse Director	- Contact details for further information
12/05/2014	- The date the report has been published
April 2014	- The time period the data in the dashboard relate to

Summary of Performance - April 2014



Unplanned Re-attendance Rate



Narrative

Description of Data

Unplanned re-attendance at TRUST LEVEL within 7 days of the original attendance (including patients referred back by another health professional)

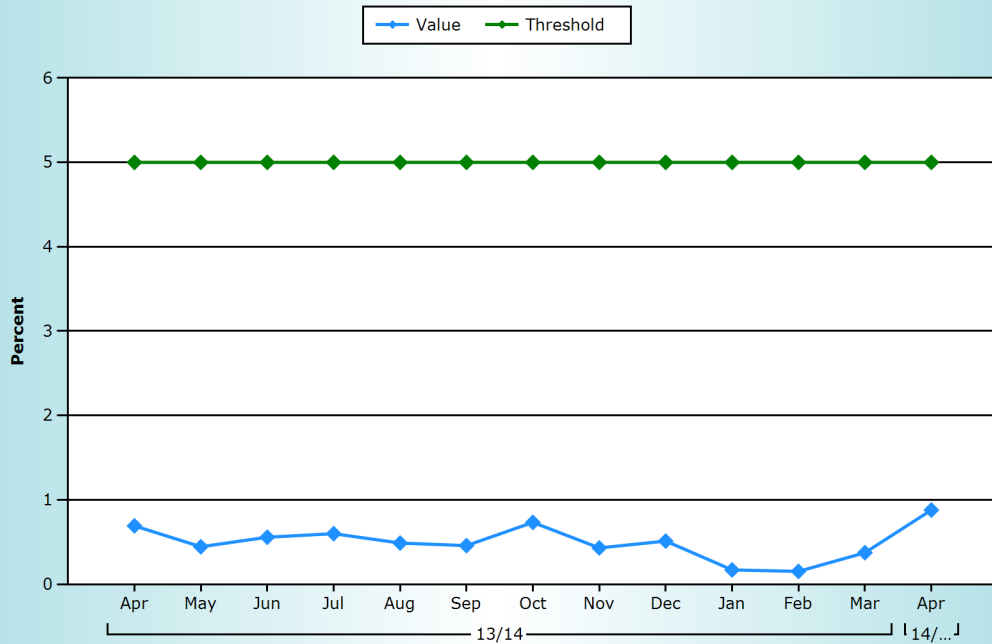
Rate This Month

5%

Compared to Last Month

Worse

Left Without Being Seen



Narrative

The number of patients who left the Minor Injuries Unit in April rose marginally.

Description of Data

The percentage of people who leave the MINOR INJURIES UNIT department without being seen by a clinical decision maker

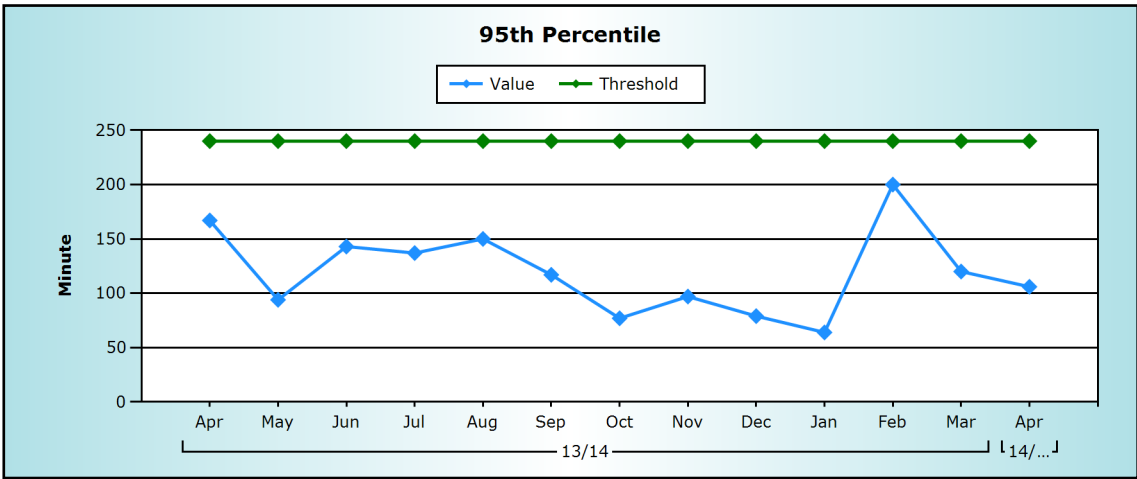
Rate This Month

0.88%

Compared to Last Month

Worse

Total Time Spent in MINOR INJURIES UNIT (Admitted)



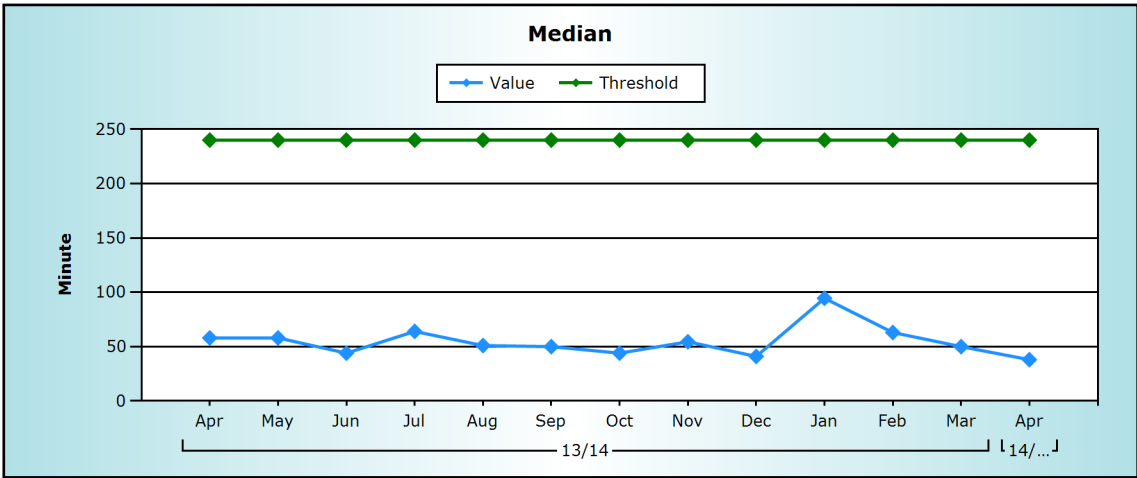
Narrative

95% of patients who required admission from the Minor Injuries Unit were seen, treated and admitted in under 2 hours.

Description of Data

The total time patients who were admitted to hospital spent in the MINOR INJURIES UNIT department (95th percentile)

Rate This Month	Compared to Last Month
106	Improved

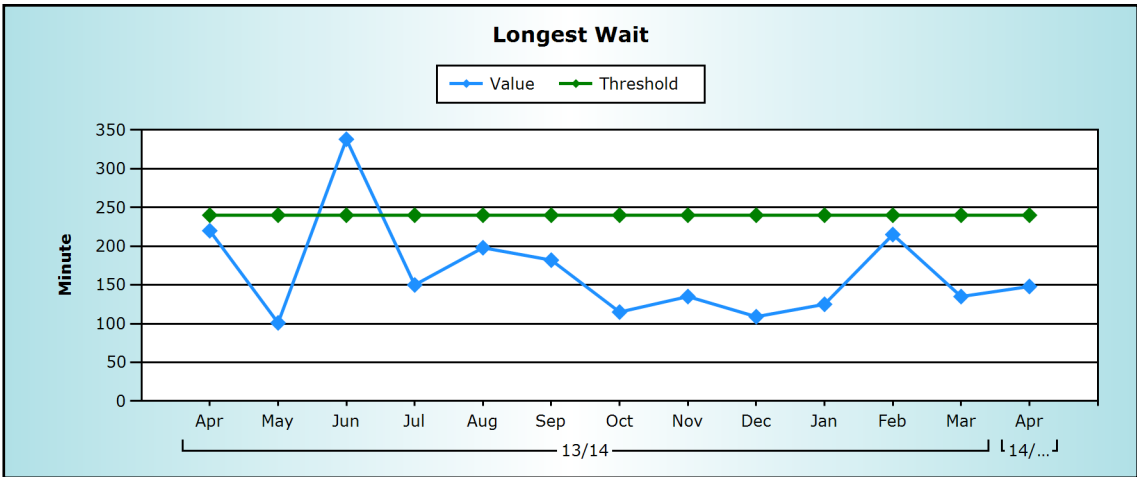


Narrative

Description of Data

The total time patients who were admitted to hospital spent in the MINOR INJURIES UNIT department (Median)

Rate This Month	Compared to Last Month
38	Improved



Narrative

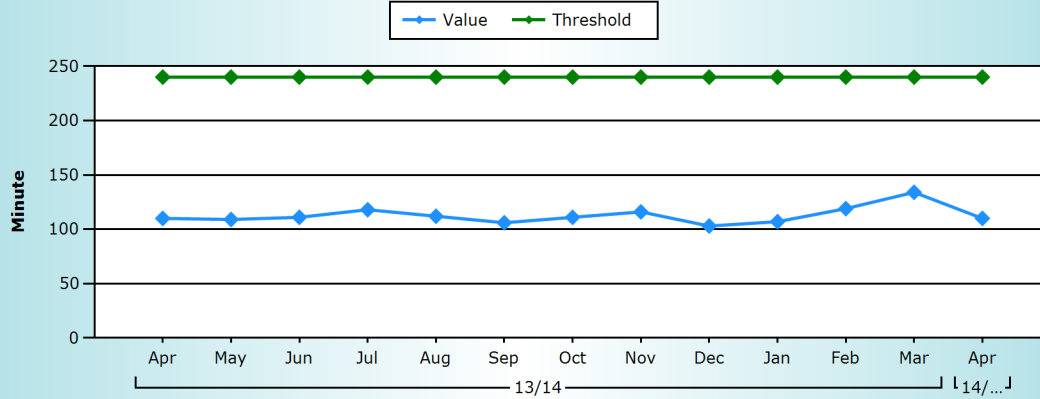
Description of Data

The total time patients who were admitted to hospital spent in the MINOR INJURIES UNIT department(Longest Wait)

Rate This Month	Compared to Last Month
148	Worse

Total Time Spent in MINOR INJURIES UNIT (Non-Admitted)

95th Percentile



Narrative

In April, 95% of our patients who did not require admission were seen, treated and discharged in under 2 hours.

Description of Data

The total time patients who were not admitted to hospital spent in the MINOR INJURIES UNIT department (95th Percentile)

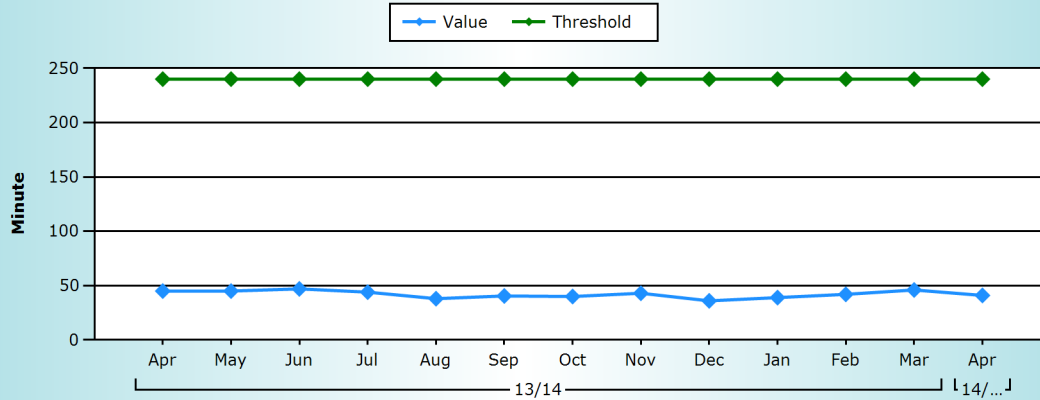
Rate This Month

110

Compared to Last Month

Improved

Median



Narrative

Description of Data

The total time patients who were not admitted to hospital spent in the MINOR INJURIES UNIT department (Median)

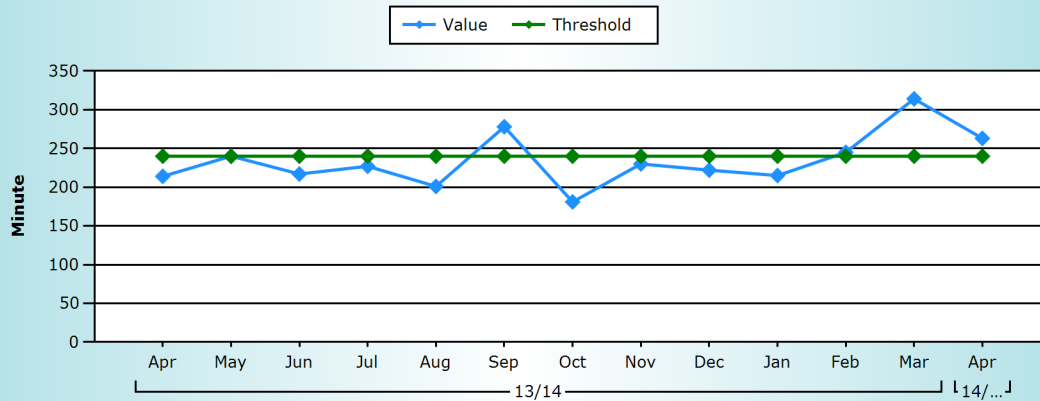
Rate This Month

41

Compared to Last Month

Improved

Longest Wait



Narrative

Description of Data

The total time patients who were not admitted to hospital spent in the MINOR INJURIES UNIT department (Longest Wait)

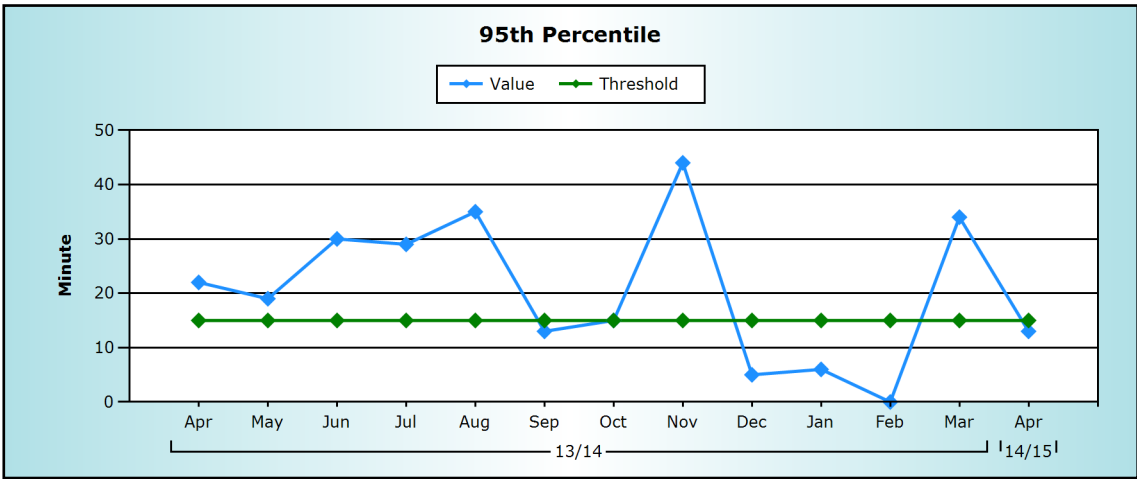
Rate This Month

263

Compared to Last Month

Improved

MINOR INJURIES UNIT Ambulance Arrivals to Assessment



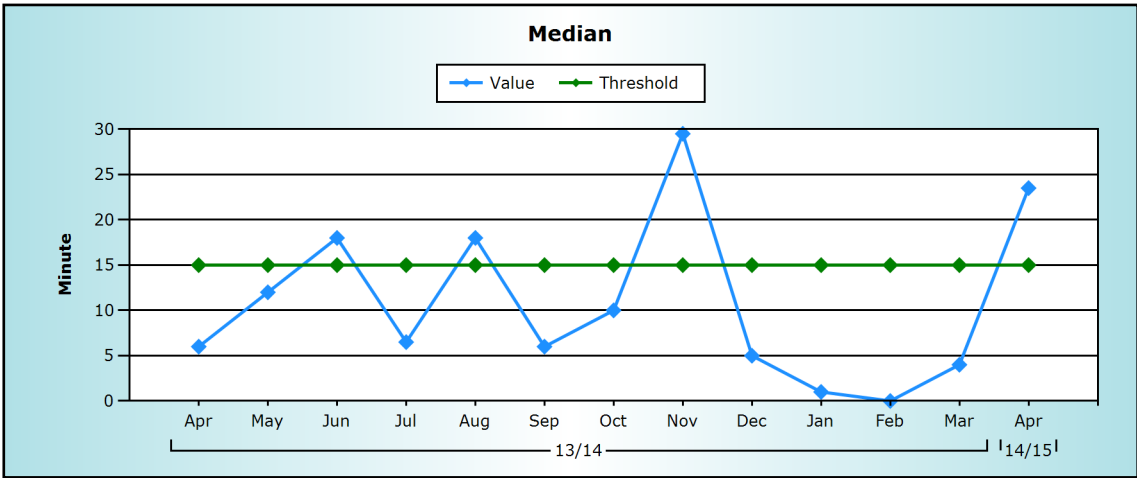
Narrative

The time from arrival to assessment in the Minor Injuries Unit in April fell to 13 minutes for 95% of our patients.

Description of Data

The time from arrival by 999 ambulance in MINOR INJURIES UNIT to a full initial assessment, which includes a pain score and an early warning score (95th Percentile)

Rate This Month	Compared to Last Month
13	Improved

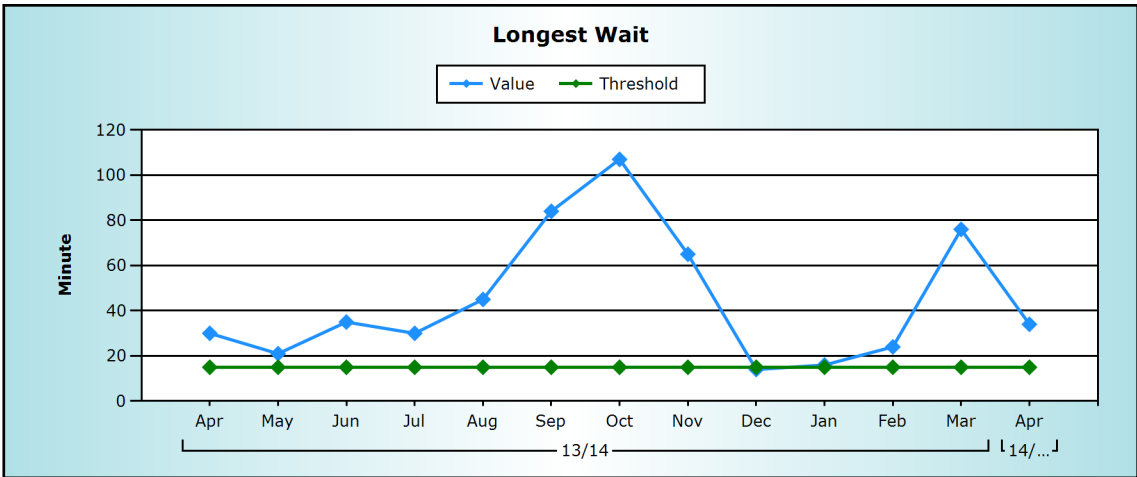


Narrative

Description of Data

The time from arrival by 999 ambulance in MINOR INJURIES UNIT to a full initial assessment, which includes a pain score and an early warning score (Median)

Rate This Month	Compared to Last Month
24	Worse



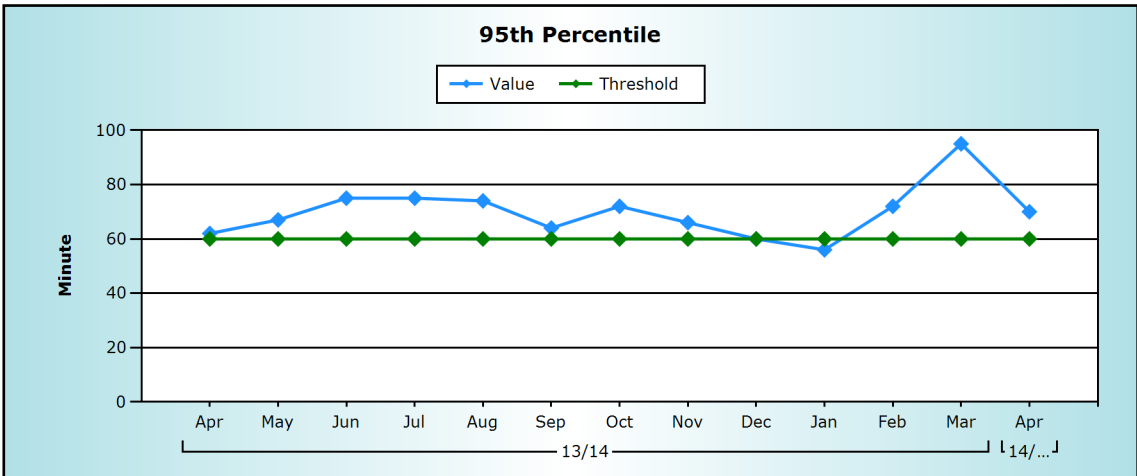
Narrative

Description of Data

The time from arrival by 999 ambulance in MINOR INJURIES UNIT to a full initial assessment, which includes a pain score and an early warning score (Longest Wait)

Rate This Month	Compared to Last Month
34	Improved

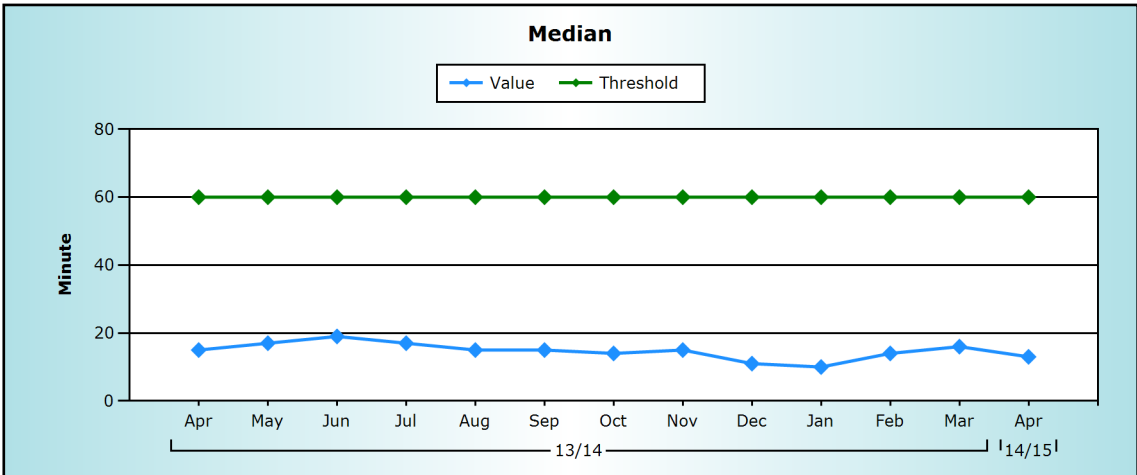
MINOR INJURIES UNIT Time from Arrival to Treatment



Narrative

Description of Data
The time from arrival in MINOR INJURIES UNIT to when a patient is seen by a health professional to diagnose the problem and arrange or start definitive treatment (95th Percentile)

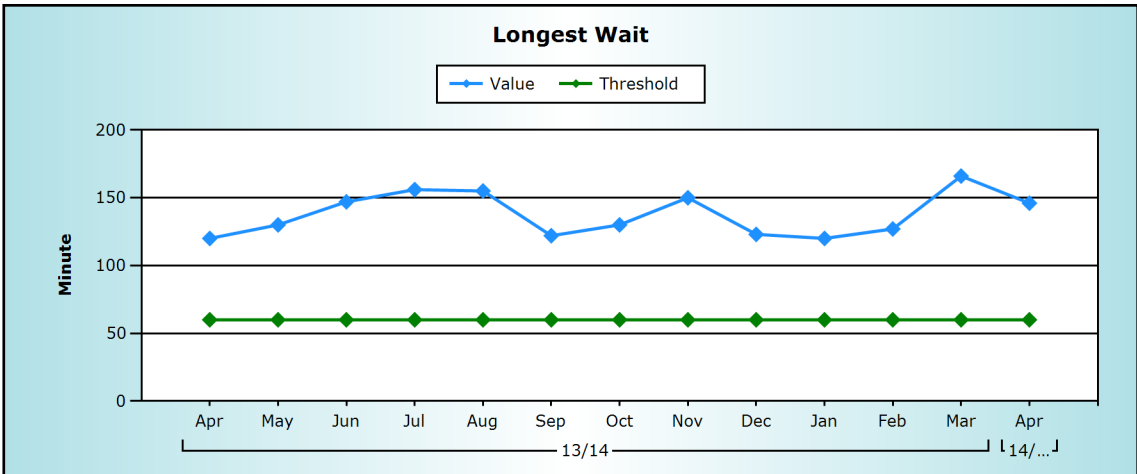
Rate This Month	Compared to Last Month
70	Improved



Narrative
The median time form arrival to treatment in the Minor Injuries Unit in April fell to 13 minutes and remained well below the threshold.

Description of Data
The time from arrival in MINOR INJURIES UNIT to when a patient is seen by a health professional to diagnose the problem and arrange or start definitive treatment (Median)

Rate This Month	Compared to Last Month
13	Improved



Narrative

Description of Data
The time from arrival in MINOR INJURIES UNIT to when a patient is seen by a health professional to diagnose the problem and arrange or start definitive treatment (Longest Wait)

Rate This Month	Compared to Last Month
146	Improved