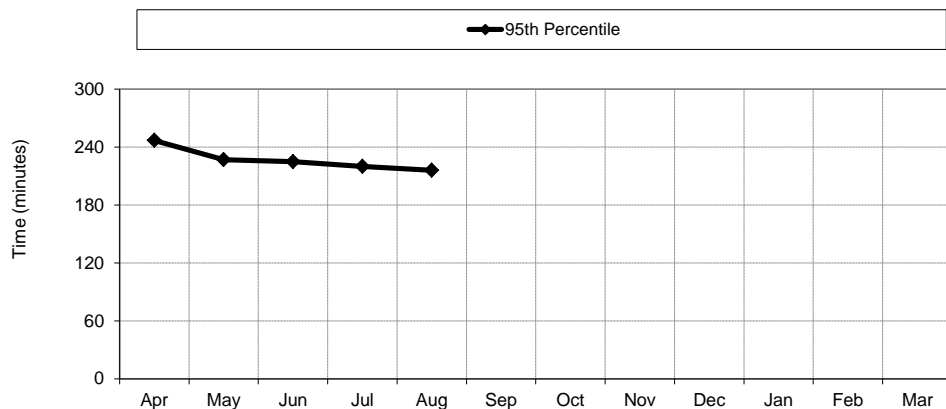


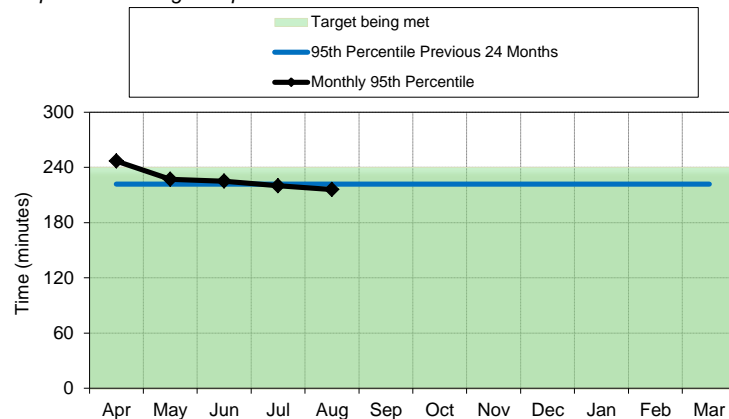
Sheffield Children's NHS Foundation Trust - A&E Quality Indicators 2013/14

Total time in the A&E department

Site-level performance



Site performance against performance thresholds



Description of Data

The Total Time in the A&E Department indicator looks at all attendances to the Emergency Department and measures the time between when the patient first arrived and the time the patient was either admitted, transferred or discharged, i.e. the total time spent in the A&E department.

The target for the Total Time in the A&E Department is that 95% of attendances to the Emergency Department should spend 240 minutes (4 hours) or less in the department in total.

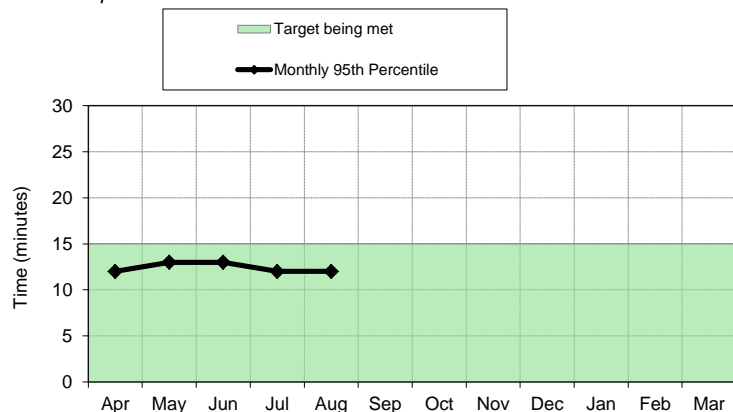
The Trust has measured this target for a number of years and has consistently achieved the requirement. In April 2013 the target was failed for the first time but this target has been achieved again for August 2013 and more than 95% of people attending the Emergency Department at Sheffield Children's Hospital were seen and either admitted or sent home within 4 hours.

Sometimes patients are in the Emergency Department longer than 4 hours if they are quite poorly and need a lot of clinical attention before they can be moved on to a more appropriate area within the hospital.

216 | 95th percentile this month

Time to Initial Assessment

Site-level performance



Description of Data

The Time to Initial Assessment indicator looks at all patients who arrived by Emergency Ambulance and measures the time between when the patient first arrived in the Emergency Department and the time they received their initial assessment.

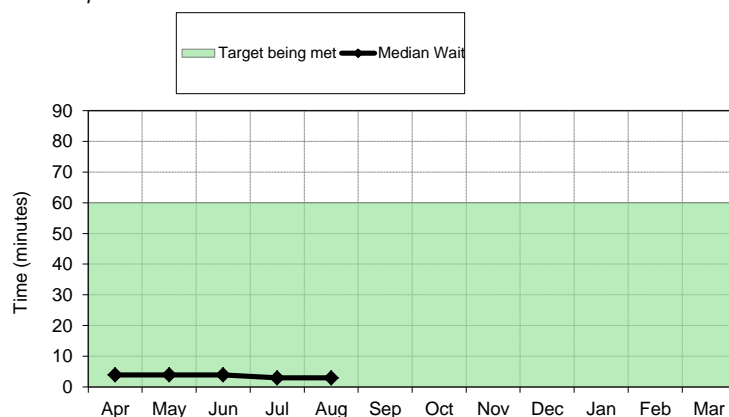
The target for Time to Initial Assessment is that 95% of patients who arrive by Emergency Ambulance should receive their initial assessment within 15 minutes of arrival.

This measures how long patients wait to be seen by a nurse or a doctor when they come to the Emergency department by ambulance. For adults this is a useful way of measuring whether the sickest patients are seen quickly. The Trust continues to meet this target, however for children it is important to realise that not all sick children come by ambulance; some very unwell children are brought by their parents in their own.

12 | 95th percentile this month

Time to Treatment

Site-level performance



Description of Data

The Time to Treatment indicator looks at all attendances to the Emergency Department and measures the time between when the patient first arrived and the time they were seen by a clinician who can diagnose the problem and arrange or start treatment, known as the decision-making clinician.

The target for Time to Treatment is that 50% of attendances to the Emergency Department should see the decision-making clinician within 60 minutes of arrival.

For this target at least half the people coming to the department should see someone who can make a decision about their treatment (this could be a nurse or a doctor) within 60 minutes. The Trust continues to exceed this target.

25 | Median Wait this month

Unplanned re-attendance		Left without being seen																									
<p><i>Site-level performance</i></p> <table border="1"> <caption>Unplanned Re-attendance Rate Data</caption> <thead> <tr> <th>Month</th> <th>Re-attendance Rate (%)</th> </tr> </thead> <tbody> <tr><td>Apr</td><td>7.5</td></tr> <tr><td>May</td><td>7.6</td></tr> <tr><td>Jun</td><td>7.8</td></tr> <tr><td>Jul</td><td>7.9</td></tr> <tr><td>Aug</td><td>7.0</td></tr> </tbody> </table>	Month	Re-attendance Rate (%)	Apr	7.5	May	7.6	Jun	7.8	Jul	7.9	Aug	7.0	<p>Description of Data</p> <p>The Unplanned Re-attendance Rate indicator looks at unplanned follow-up attendances to the Emergency Department within 7 days of the patient's original attendance.</p> <p>The target for the Unplanned Re-attendance Rate is that less than 5% of patients should re-attend an unplanned follow-up within 7 days.</p>	<p><i>Site-level performance</i></p> <table border="1"> <caption>Left without being seen Rate Data</caption> <thead> <tr> <th>Month</th> <th>Left without being seen rate (%)</th> </tr> </thead> <tbody> <tr><td>Apr</td><td>1.9</td></tr> <tr><td>May</td><td>1.3</td></tr> <tr><td>Jun</td><td>1.4</td></tr> <tr><td>Jul</td><td>1.1</td></tr> <tr><td>Aug</td><td>0.4</td></tr> </tbody> </table>	Month	Left without being seen rate (%)	Apr	1.9	May	1.3	Jun	1.4	Jul	1.1	Aug	0.4	<p>Description of Data</p> <p>The Left Without Being Seen Rate indicator looks at patients who left the Emergency Department before seeing a clinician who could diagnose the problem and arrange or start treatment (known as the decision-making clinician).</p> <p>The target for the Left Without Being Seen Rate is that less than 5% of patients should leave the department before seeing a decision-making clinician.</p>
Month	Re-attendance Rate (%)																										
Apr	7.5																										
May	7.6																										
Jun	7.8																										
Jul	7.9																										
Aug	7.0																										
Month	Left without being seen rate (%)																										
Apr	1.9																										
May	1.3																										
Jun	1.4																										
Jul	1.1																										
Aug	0.4																										
<p>Re attendance within 7 days is more common in children than in adults as children more often suffer different conditions within a shorter time span, for example having an accident and then later a chest infection. This indicator is not sufficiently sensitive to separate these issues out however the Department of Health require that all Trusts be measured against this target. The Trust has revised the methodology in calculating performance so it is the same as the method used by the Department of Health and as a result, this target is showing as not being achieved. For children, we would always say if you remain worried about your child when you have gone home, or the situation changes do come back, or if appropriate make an appointment with your GP if this can be done in a timely way.</p>	<table border="1"> <tr> <td style="width: 10%;">7.0%</td> <td>Rate this month</td> </tr> </table>	7.0%	Rate this month	<p>The Trust continues to achieve this target and shows that not many patients who come to the hospital leave before being seen by a clinical member of staff. Sometimes, when the hospital is busy the number of people who leave without being seen can increase.</p>	<table border="1"> <tr> <td style="width: 10%;">0.4%</td> <td>Rate this month</td> </tr> </table>	0.4%	Rate this month																				
7.0%	Rate this month																										
0.4%	Rate this month																										