

## MINOR INJURIES UNIT Clinical Quality Indicators

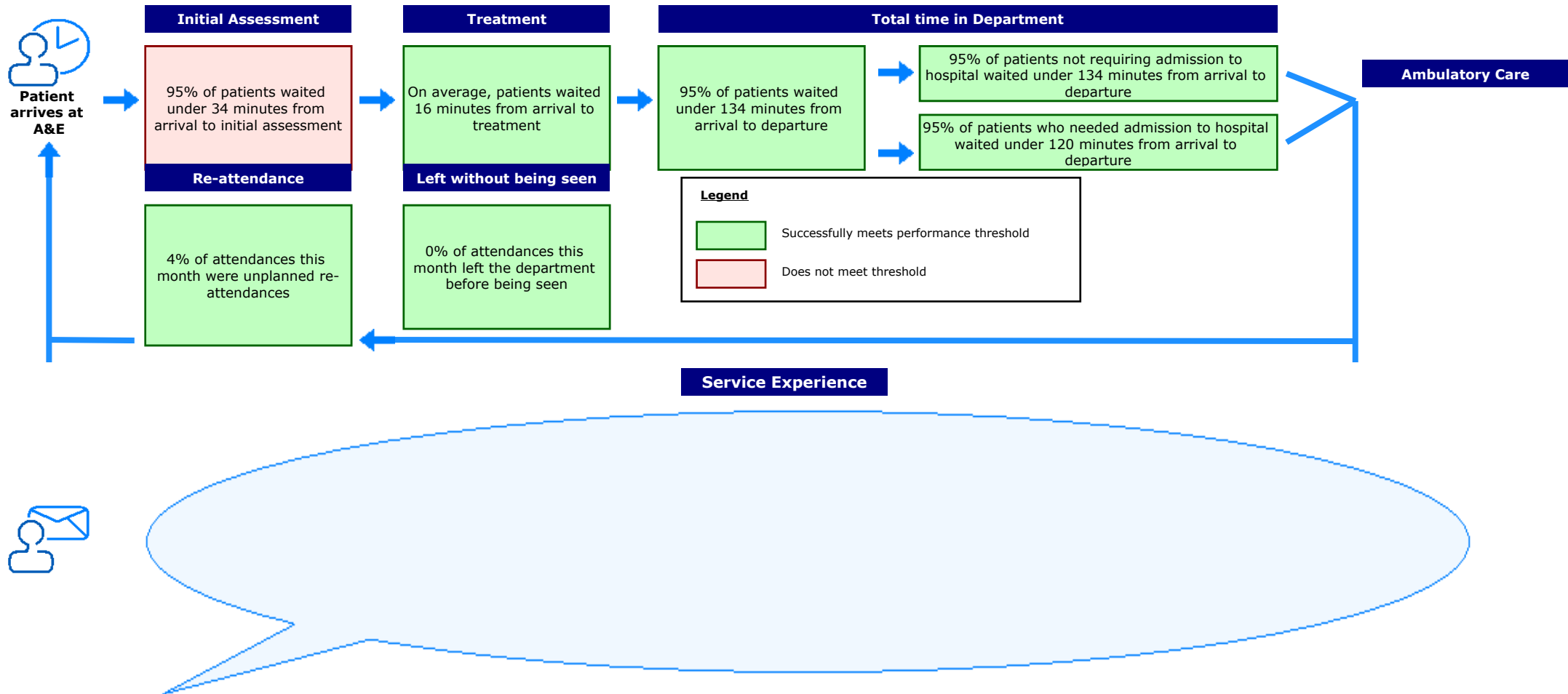
### Overview

This dashboard presents a comprehensive and balanced view of the care delivered by our MINOR INJURIES UNIT department, and reflects the experience and safety of our patients and the effectiveness of the care they receive. These indicators will support patient expectations of high quality MINOR INJURIES UNIT services and allow our department to demonstrate our ambition to deliver excellent services which are continuously improving.

### General Information

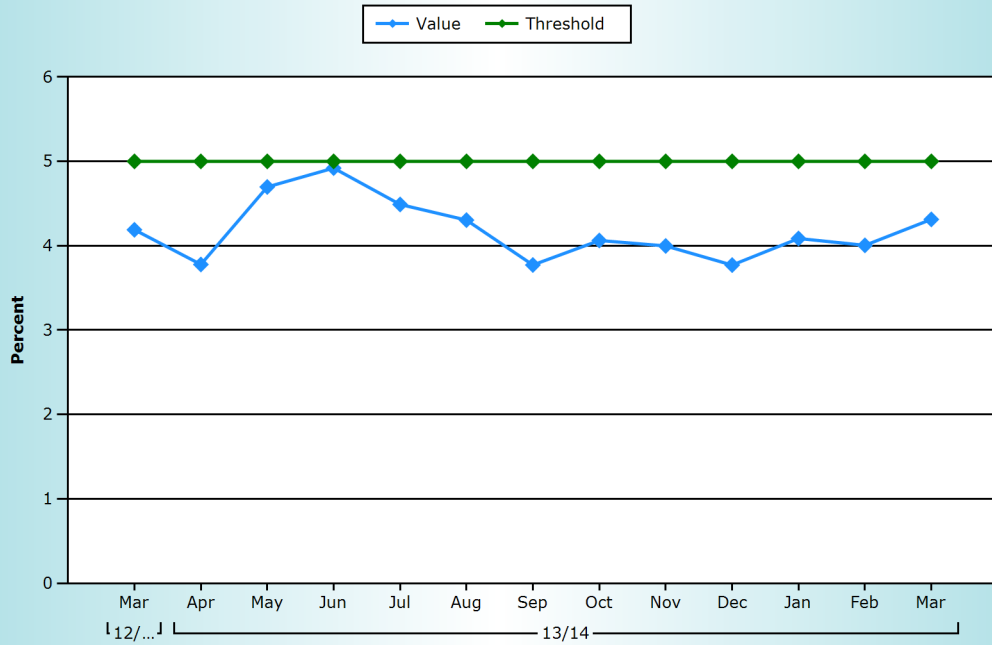
Northern General Hospital, Sheffield Teaching Hospitals	- Site name and organisation code
Service Manager/Nurse Director	- Contact details for further information
15/04/2014	- The date the report has been published
March 2014	- The time period the data in the dashboard relate to

### Summary of Performance - March 2014



N.B. Information on Service Experience and Ambulatory Care are collected on a quarterly basis; information on Consultant Sign Off is collected on a six-monthly basis

### Unplanned Re-attendance Rate



### Narrative

The Trust's unplanned re-attendance rate in March was 4.31%.

### Description of Data

Unplanned re-attendance at TRUST LEVEL within 7 days of the original attendance (including patients referred back by another health professional)

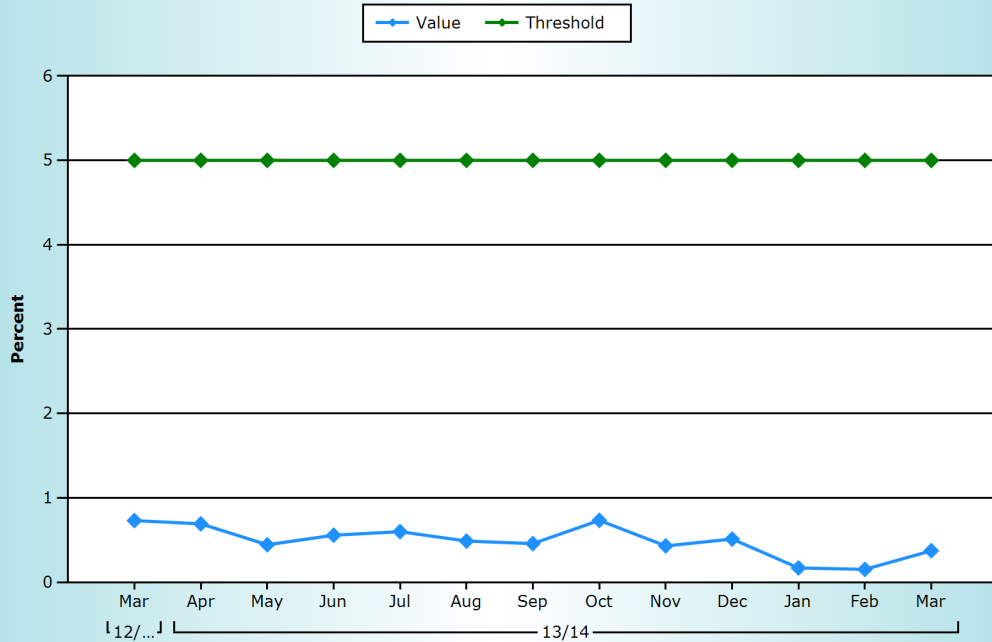
#### Rate This Month

4.31%

#### Compared to Last Month

Improved

### Left Without Being Seen



### Narrative

The number of patients who left the Minor Injuries Unit without being seen rose marginally in March.

### Description of Data

The percentage of people who leave the MINOR INJURIES UNIT department without being seen by a clinical decision maker

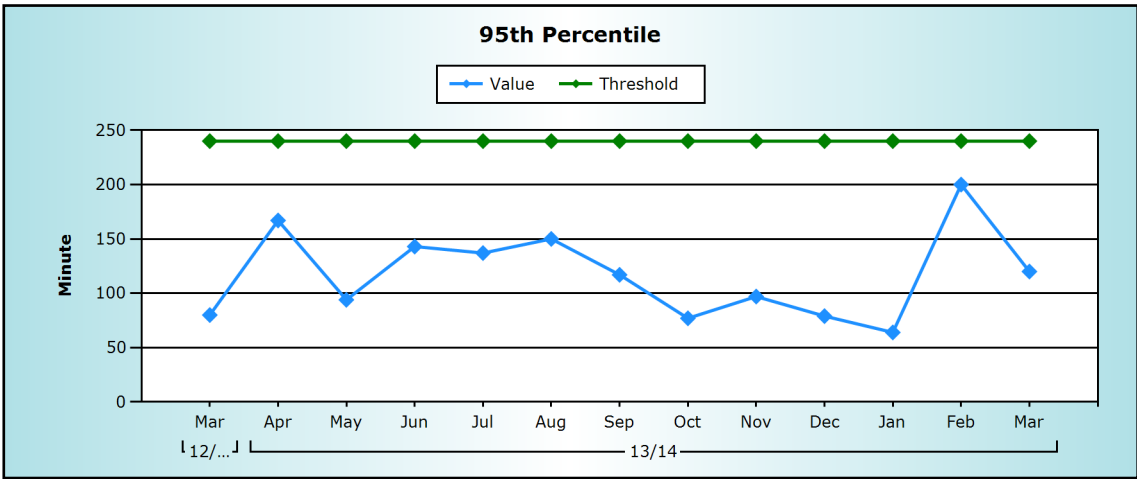
#### Rate This Month

0.37%

#### Compared to Last Month

Worse

### Total Time Spent in MINOR INJURIES UNIT (Admitted)



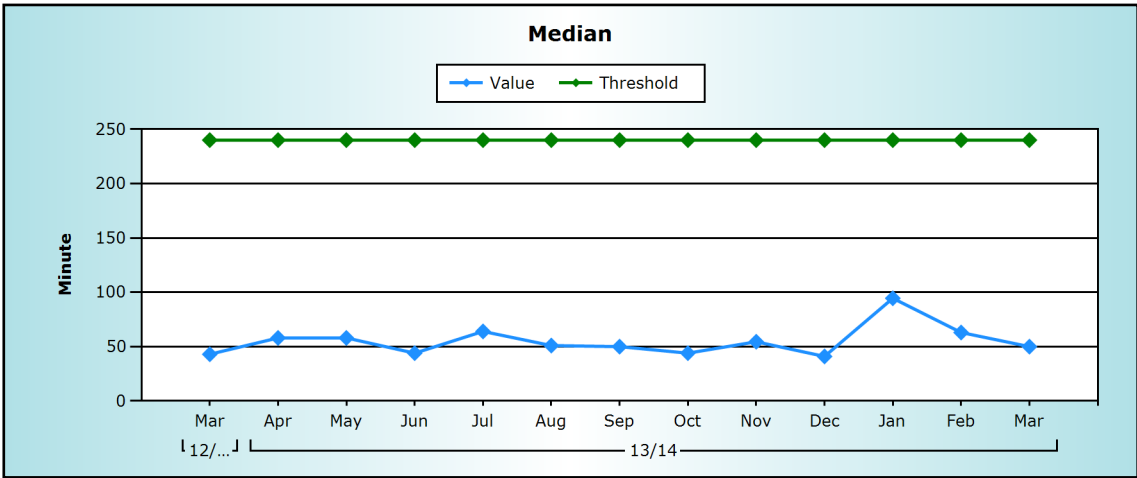
**Narrative**

95% of patients who required admission from the Minor Injuries Unit were seen, treated and admitted within 2 hours.

**Description of Data**

The total time patients who were admitted to hospital spent in the MINOR INJURIES UNIT department (95th percentile)

Rate This Month	Compared to Last Month
120	Improved

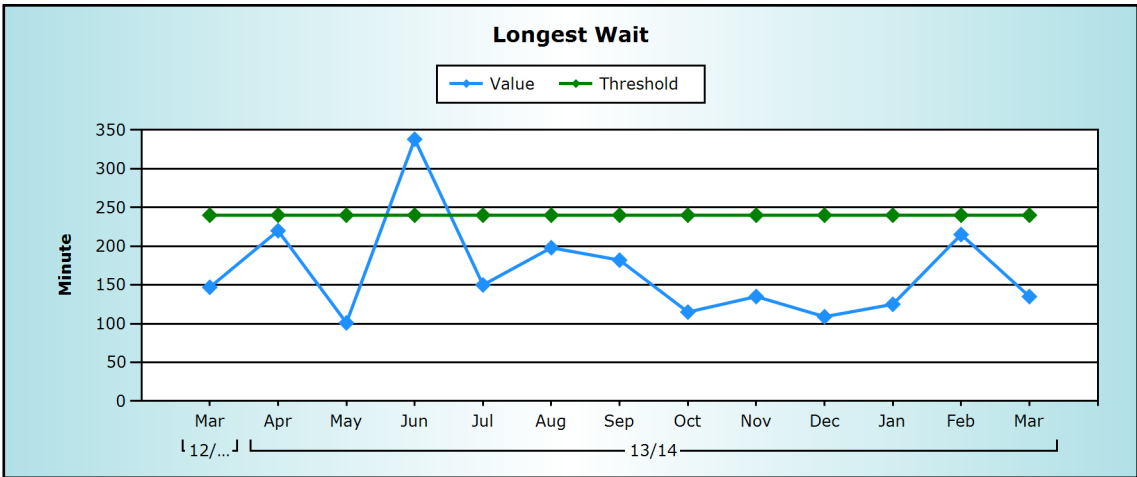


**Narrative**

**Description of Data**

The total time patients who were admitted to hospital spent in the MINOR INJURIES UNIT department (Median)

Rate This Month	Compared to Last Month
50	Improved



**Narrative**

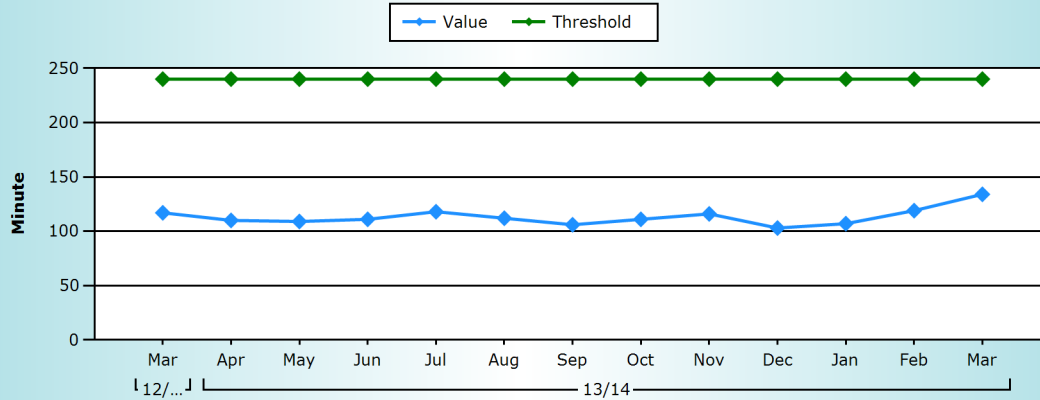
**Description of Data**

The total time patients who were admitted to hospital spent in the MINOR INJURIES UNIT department(Longest Wait)

Rate This Month	Compared to Last Month
135	Improved

## Total Time Spent in MINOR INJURIES UNIT (Non-Admitted)

### 95th Percentile



#### Narrative

In March, 95% of our patients who did not require admission were seen, treated and discharged in a little over 2 hours.

#### Description of Data

The total time patients who were not admitted to hospital spent in the MINOR INJURIES UNIT department (95th Percentile)

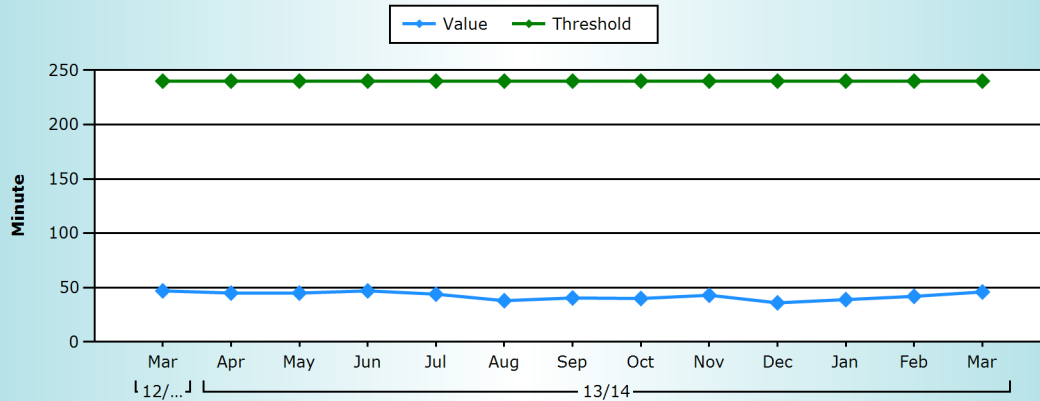
#### Rate This Month

134

#### Compared to Last Month

Worse

### Median



#### Narrative

#### Description of Data

The total time patients who were not admitted to hospital spent in the MINOR INJURIES UNIT department (Median)

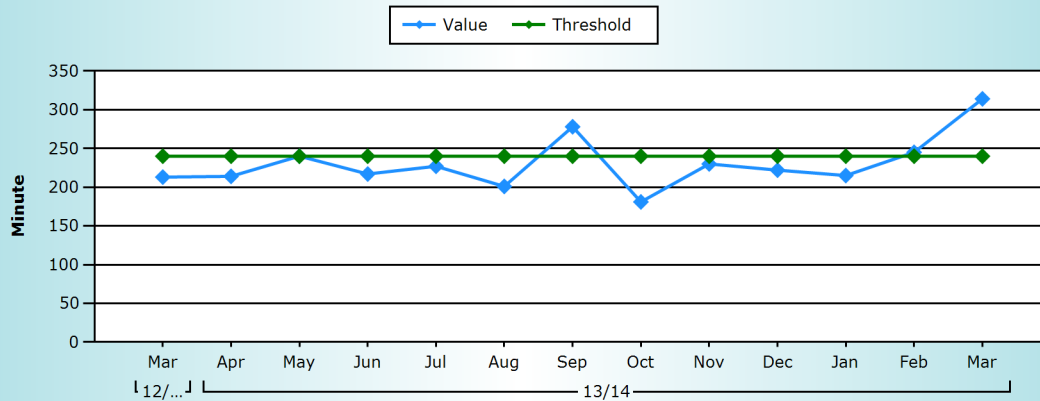
#### Rate This Month

46

#### Compared to Last Month

Worse

### Longest Wait



#### Narrative

#### Description of Data

The total time patients who were not admitted to hospital spent in the MINOR INJURIES UNIT department (Longest Wait)

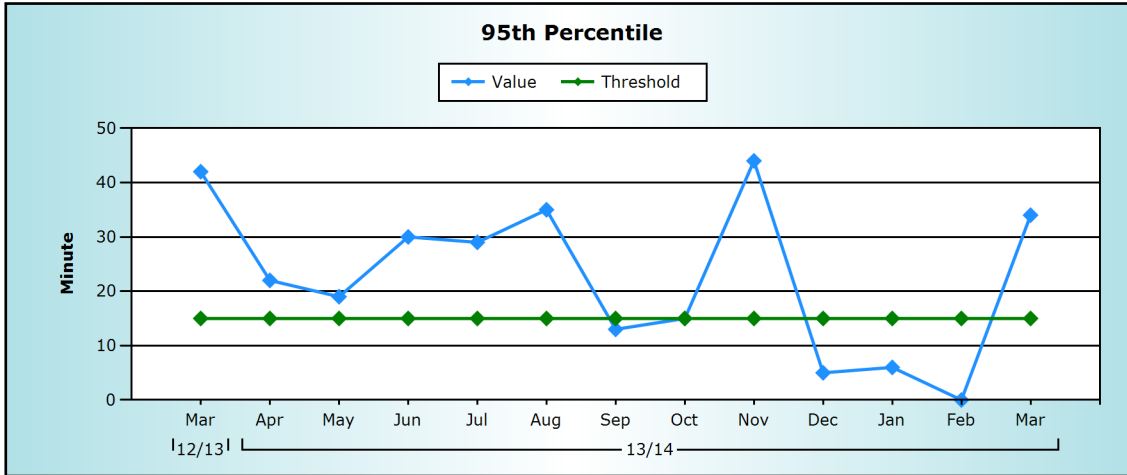
#### Rate This Month

314

#### Compared to Last Month

Worse

## MINOR INJURIES UNIT Ambulance Arrivals to Assessment



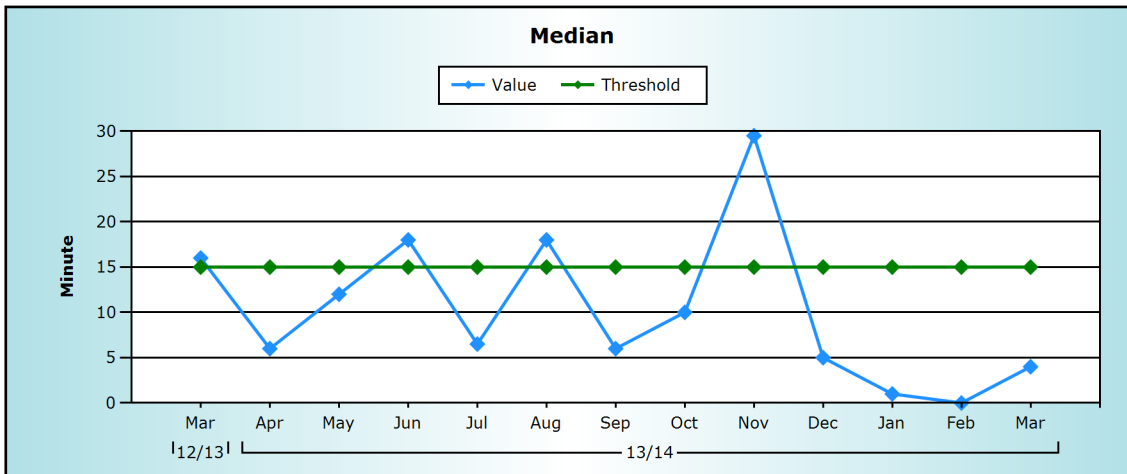
**Narrative**

The time from arrival to assessment in the Minor Injuries Unit rose in March. The Minor Injuries Unit is not resourced for ambulance arrivals and it may take some time to signpost the patient to the correct area.

**Description of Data**

The time from arrival by 999 ambulance in MINOR INJURIES UNIT to a full initial assessment, which includes a pain score and an early warning score (95th Percentile)

<b>Rate This Month</b>	<b>Compared to Last Month</b>
34	Worse

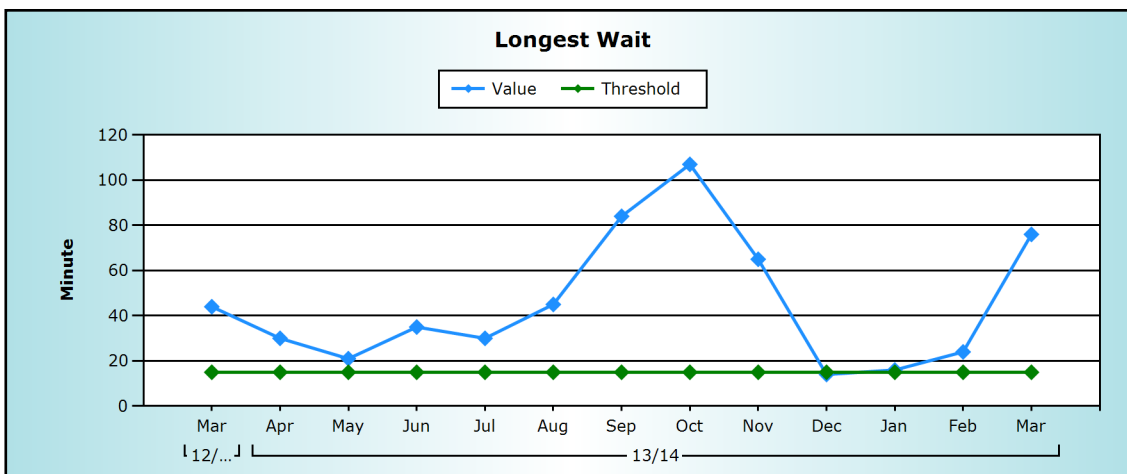


**Narrative**

**Description of Data**

The time from arrival by 999 ambulance in MINOR INJURIES UNIT to a full initial assessment, which includes a pain score and an early warning score (Median)

<b>Rate This Month</b>	<b>Compared to Last Month</b>
4	Worse



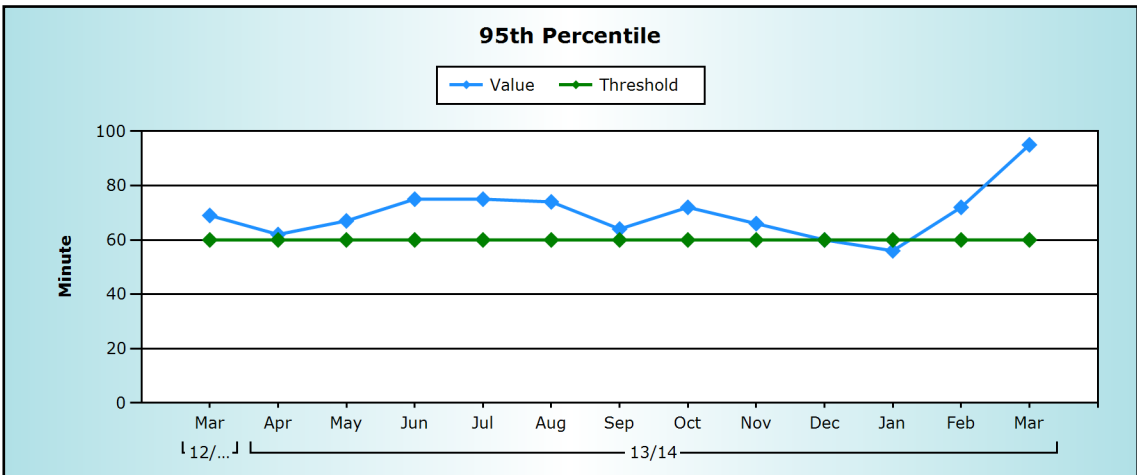
**Narrative**

**Description of Data**

The time from arrival by 999 ambulance in MINOR INJURIES UNIT to a full initial assessment, which includes a pain score and an early warning score (Longest Wait)

<b>Rate This Month</b>	<b>Compared to Last Month</b>
76	Worse

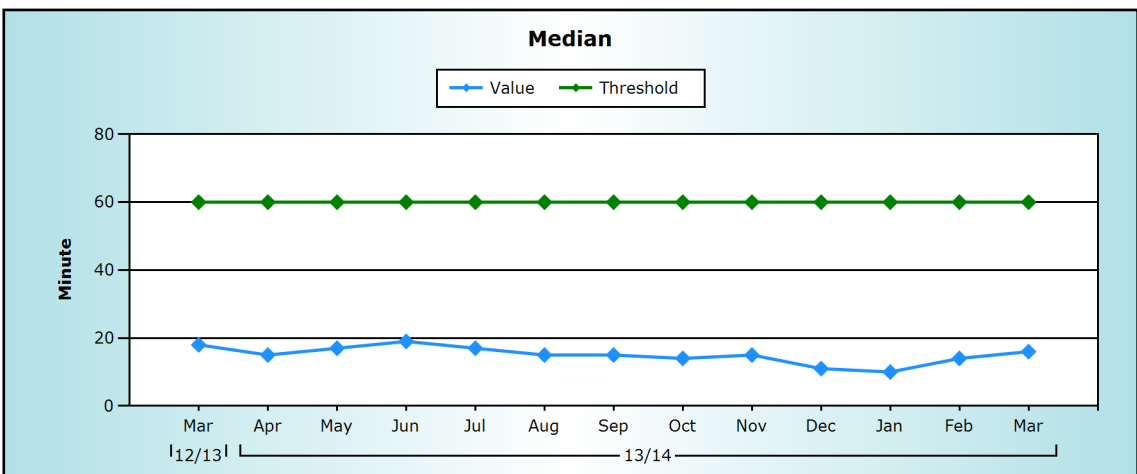
## MINOR INJURIES UNIT Time from Arrival to Treatment



**Narrative**

**Description of Data**  
The time from arrival in MINOR INJURIES UNIT to when a patient is seen by a health professional to diagnose the problem and arrange or start definitive treatment (95th Percentile)

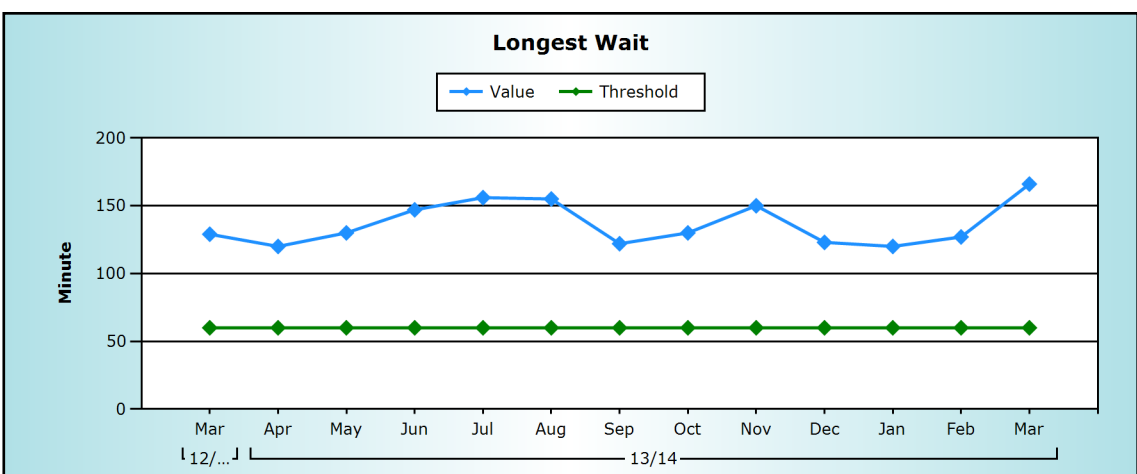
<b>Rate This Month</b>	<b>Compared to Last Month</b>
95	Worse



**Narrative**  
The median time from arrival to treatment in the Minor Injuries Unit in March rose marginally but remained well beneath the threshold.

**Description of Data**  
The time from arrival in MINOR INJURIES UNIT to when a patient is seen by a health professional to diagnose the problem and arrange or start definitive treatment (Median)

<b>Rate This Month</b>	<b>Compared to Last Month</b>
16	Worse



**Narrative**

**Description of Data**  
The time from arrival in MINOR INJURIES UNIT to when a patient is seen by a health professional to diagnose the problem and arrange or start definitive treatment (Longest Wait)

<b>Rate This Month</b>	<b>Compared to Last Month</b>
166	Worse

**Ambulatory Care - Cellulitis**

Empty box for narrative text.

Narrative

Description of Data

Rate This Month

Compared to Last Month

**Ambulatory Care - Deep Vein Thrombosis**

Empty box for narrative text.

Narrative

Description of Data

Rate This Month

Compared to Last Month