

MINOR INJURIES UNIT Clinical Quality Indicators

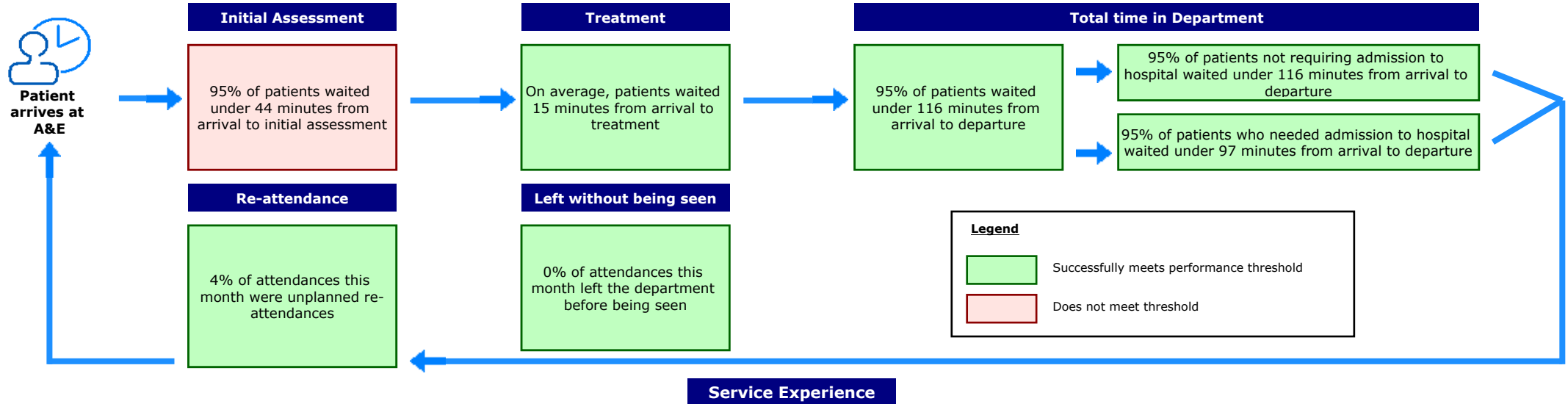
Overview

This dashboard presents a comprehensive and balanced view of the care delivered by our MINOR INJURIES UNIT department, and reflects the experience and safety of our patients and the effectiveness of the care they receive. These indicators will support patient expectations of high quality MINOR INJURIES UNIT services and allow our department to demonstrate our ambition to deliver excellent services which are continuously improving.

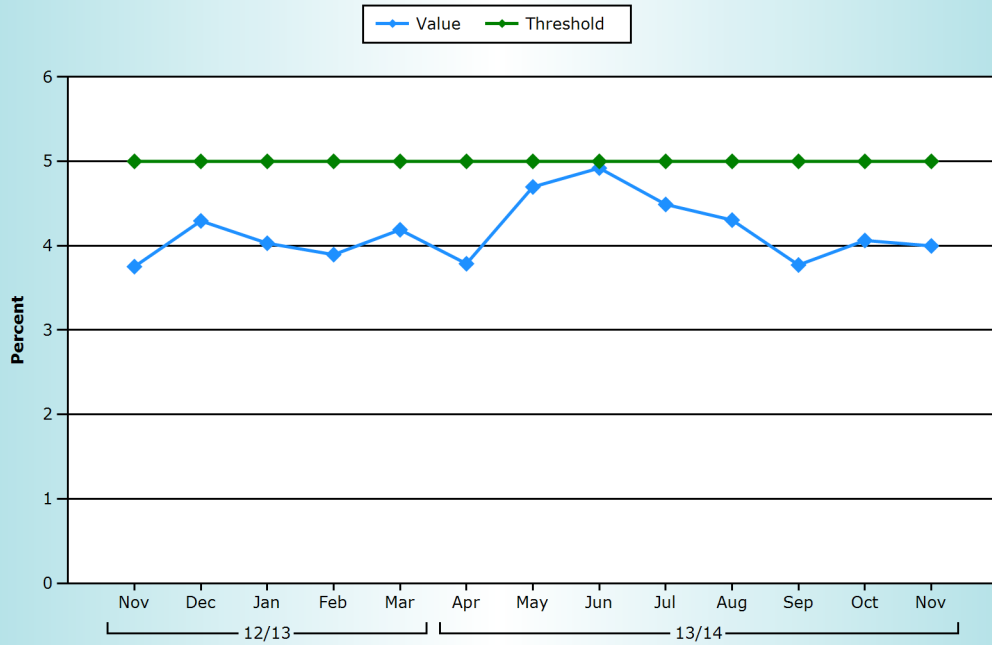
General Information

Northern General Hospital, Sheffield Teaching Hospitals	- Site name and organisation code
Type 1 (Major)	- Site type
Service Manager/Nurse Director	- Contact details for further information
09/12/2013	- The date the report has been published
November 2013	- The time period the data in the dashboard relate to

Summary of Performance - November 2013



Unplanned Re-attendance Rate



Narrative

Description of Data

Unplanned re-attendance at TRUST LEVEL within 7 days of the original attendance (including patients referred back by another health professional)

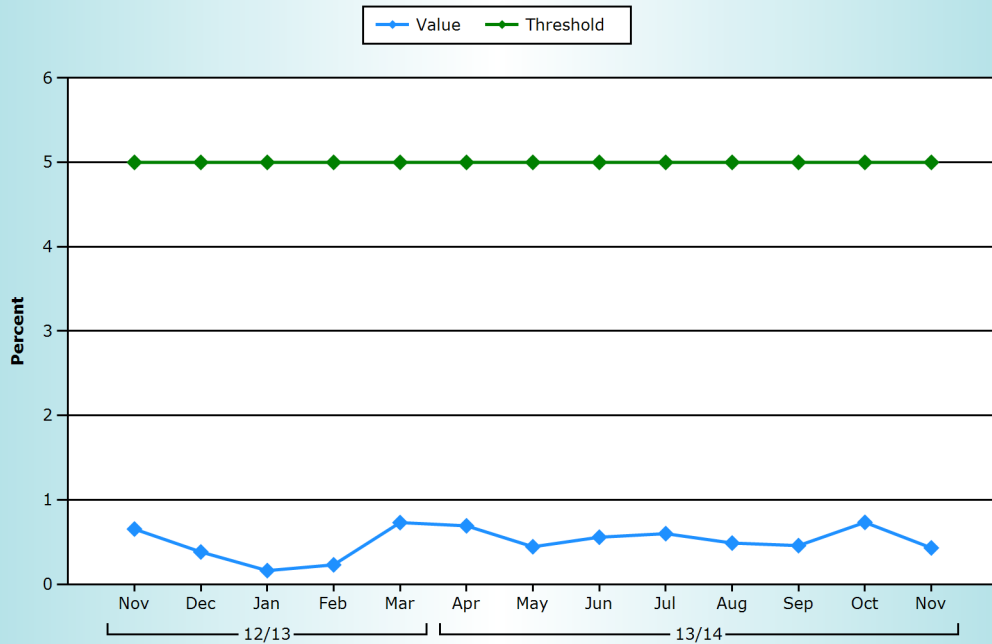
Rate This Month

4%

Compared to Last Month

Improved

Left Without Being Seen



Narrative

The number of patients who left the Minor Injuries Unit without being seen fell in November and remained well beneath the threshold.

Description of Data

The percentage of people who leave the MINOR INJURIES UNIT department without being seen by a clinical decision maker

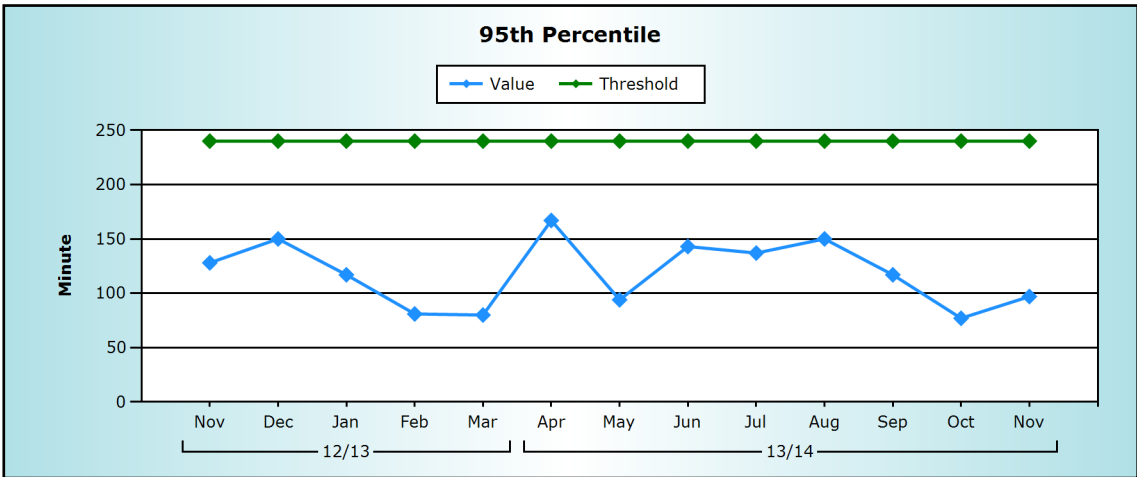
Rate This Month

0.43%

Compared to Last Month

Improved

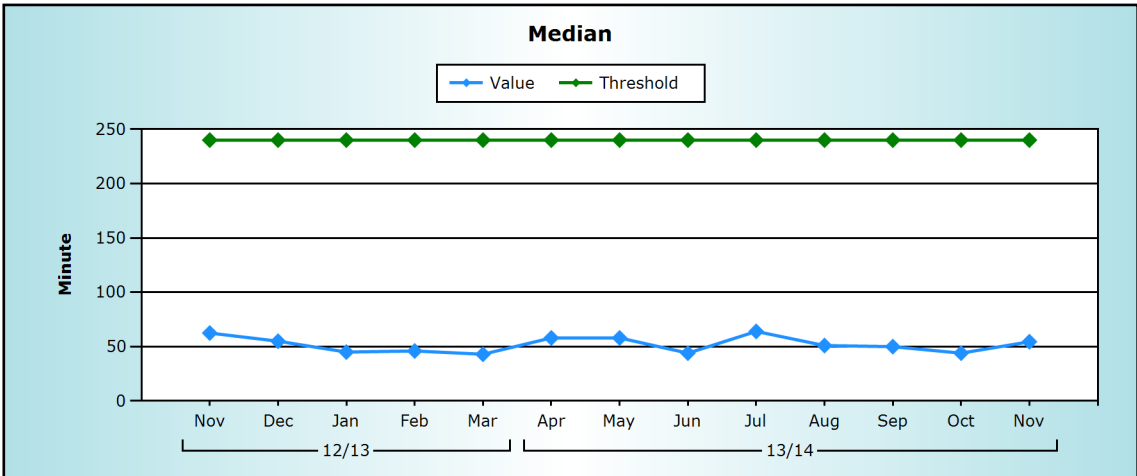
Total Time Spent in MINOR INJURIES UNIT (Admitted)



Narrative
 95% of patients who required admission from the Minor Injuries Unit in November were seen, treated and admitted in under 2 hours.

Description of Data
 The total time patients who were admitted to hospital spent in the MINOR INJURIES UNIT department (95th percentile)

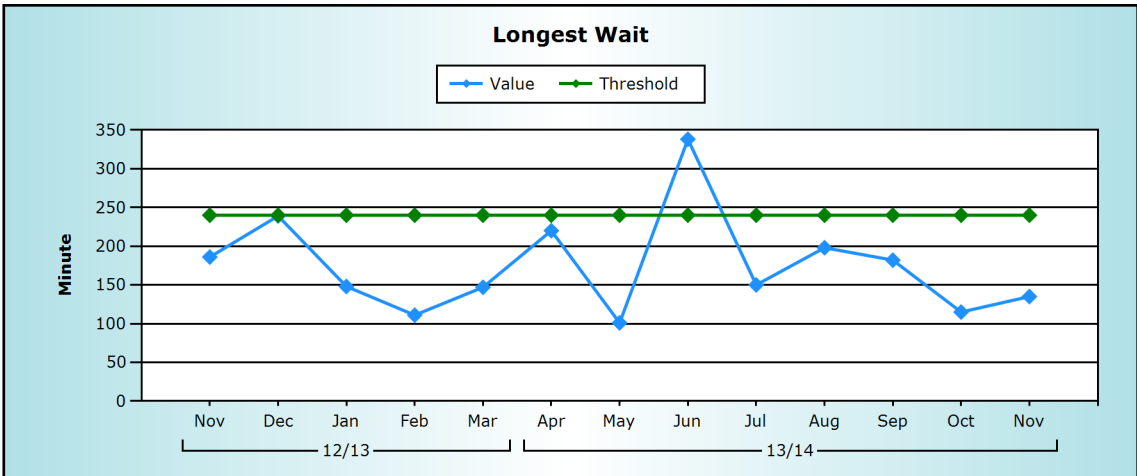
Rate This Month	Compared to Last Month
97	Worse



Narrative

Description of Data
 The total time patients who were admitted to hospital spent in the MINOR INJURIES UNIT department (Median)

Rate This Month	Compared to Last Month
55	Worse

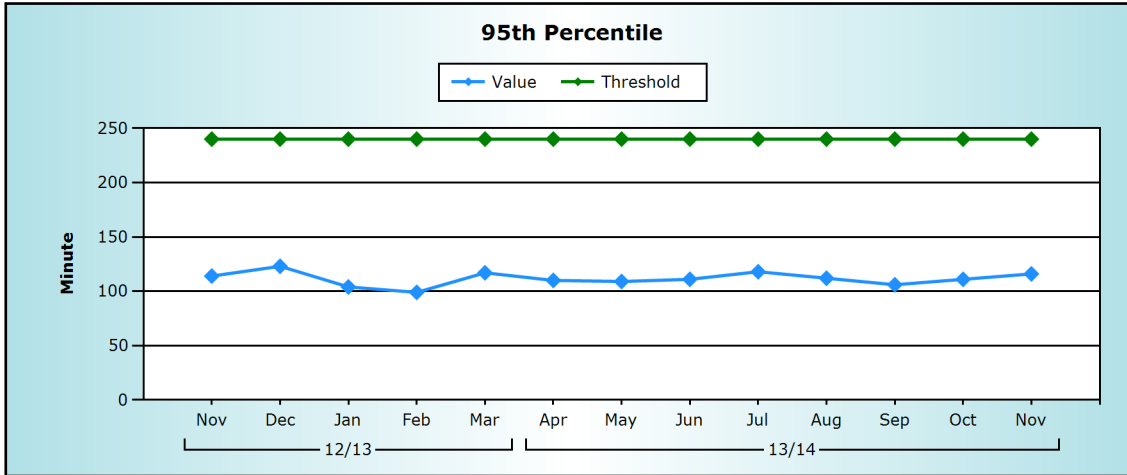


Narrative

Description of Data
 The total time patients who were admitted to hospital spent in the MINOR INJURIES UNIT department(Longest Wait)

Rate This Month	Compared to Last Month
135	Worse

Total Time Spent in MINOR INJURIES UNIT (Non-Admitted)



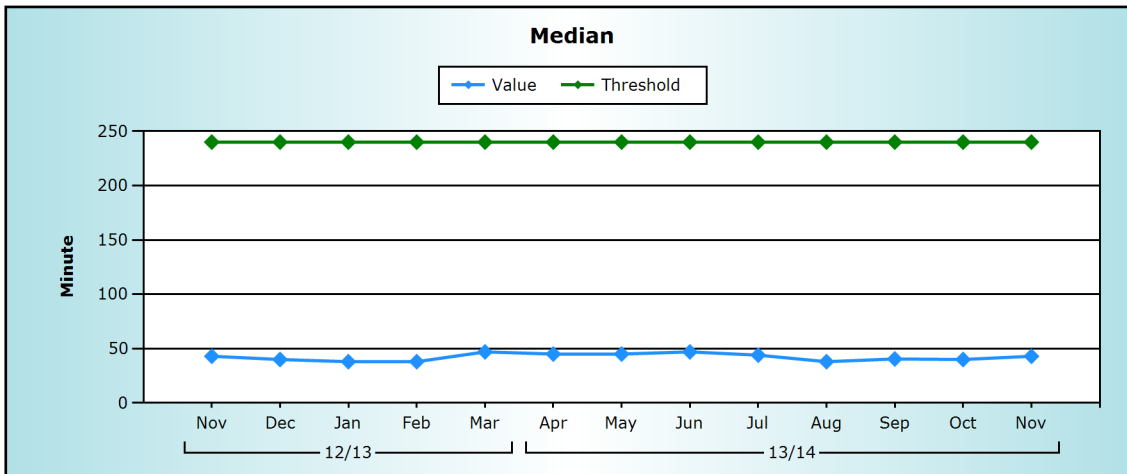
Narrative

In November, 95% of patients who did not require admission were seen, treated and discharged in under 2 hours.

Description of Data

The total time patients who were not admitted to hospital spent in the MINOR INJURIES UNIT department (95th Percentile)

Rate This Month	Compared to Last Month
116	Worse

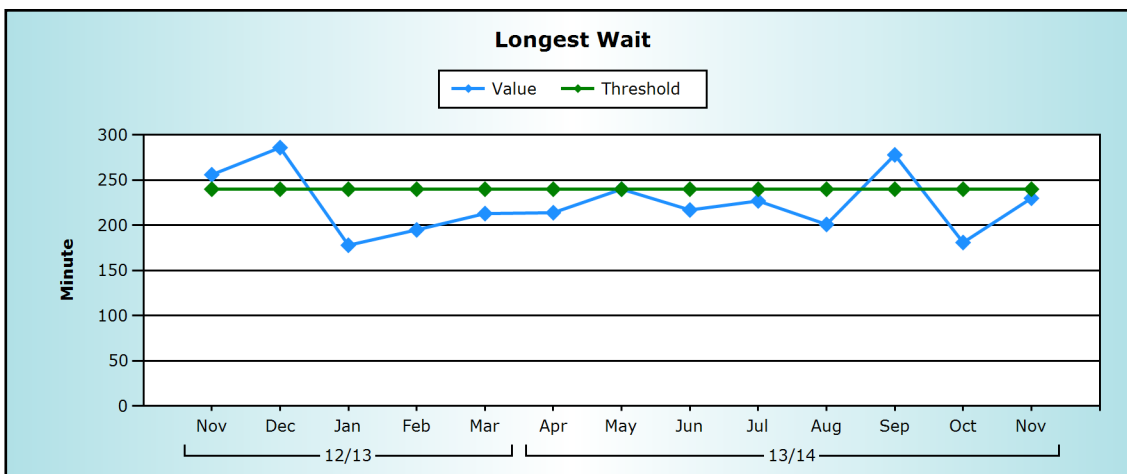


Narrative

Description of Data

The total time patients who were not admitted to hospital spent in the MINOR INJURIES UNIT department (Median)

Rate This Month	Compared to Last Month
43	Worse



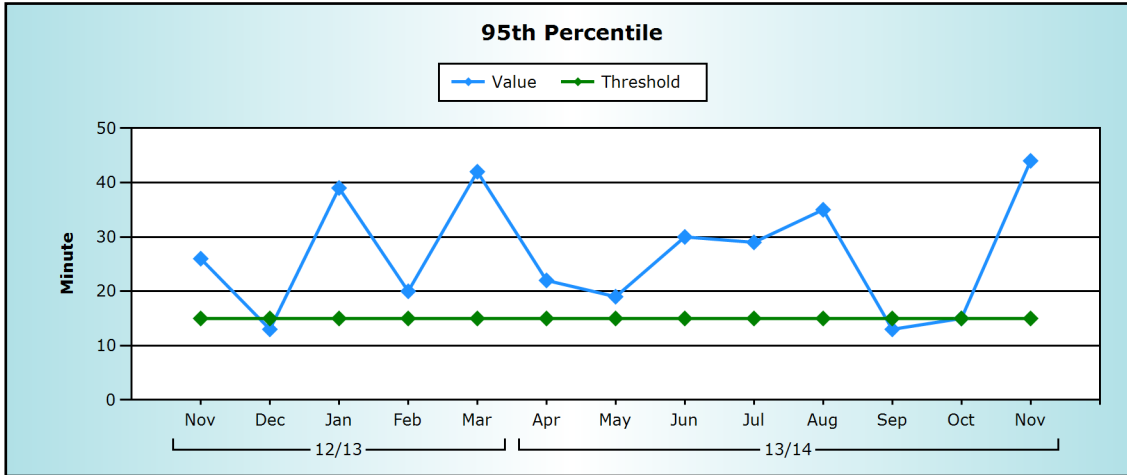
Narrative

Description of Data

The total time patients who were not admitted to hospital spent in the MINOR INJURIES UNIT department (Longest Wait)

Rate This Month	Compared to Last Month
230	Worse

MINOR INJURIES UNIT Ambulance Arrivals to Assessment



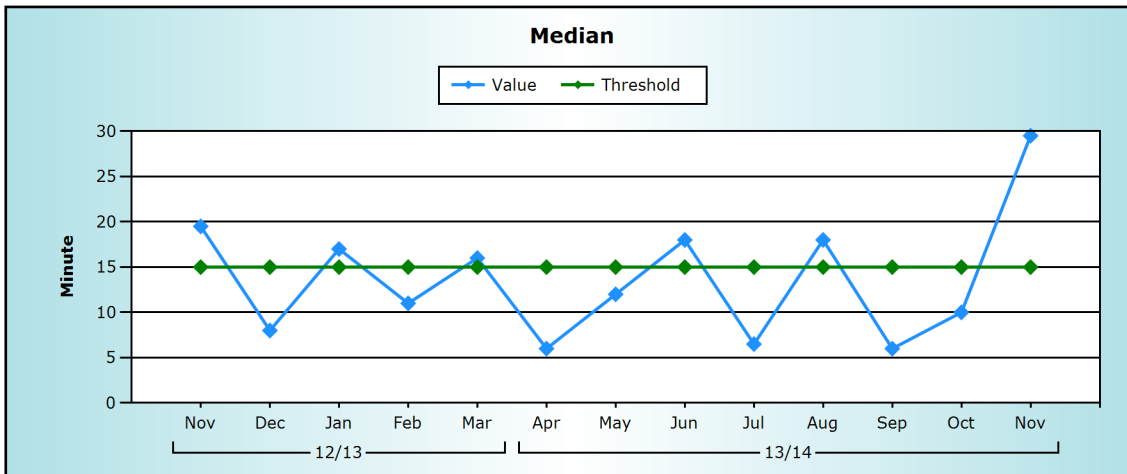
Narrative

The time it took from arrival to assessment in the Minor Injuries Unit rose in November. The Minor Injuries Unit is not resourced for ambulance arrivals and it can take time to signpost patients to the correct areas.

Description of Data

The time from arrival by 999 ambulance in MINOR INJURIES UNIT to a full initial assessment, which includes a pain score and an early warning score (95th Percentile)

Rate This Month	Compared to Last Month
44	Worse

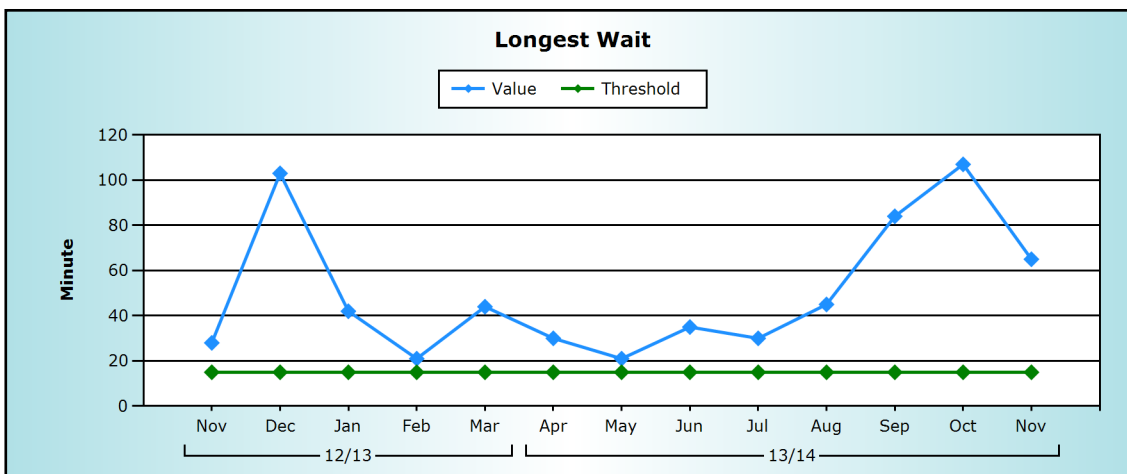


Narrative

Description of Data

The time from arrival by 999 ambulance in MINOR INJURIES UNIT to a full initial assessment, which includes a pain score and an early warning score (Median)

Rate This Month	Compared to Last Month
30	Worse



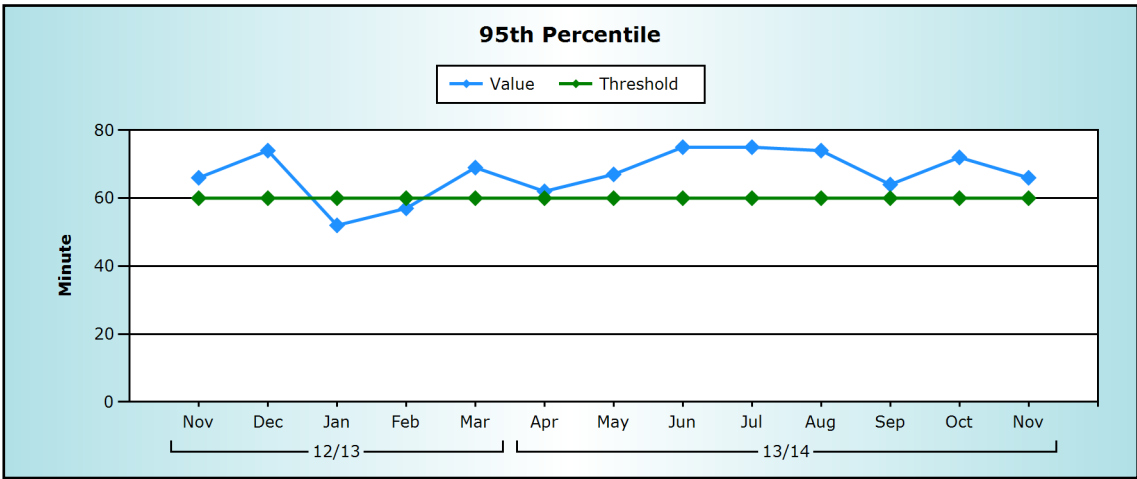
Narrative

Description of Data

The time from arrival by 999 ambulance in MINOR INJURIES UNIT to a full initial assessment, which includes a pain score and an early warning score (Longest Wait)

Rate This Month	Compared to Last Month
65	Improved

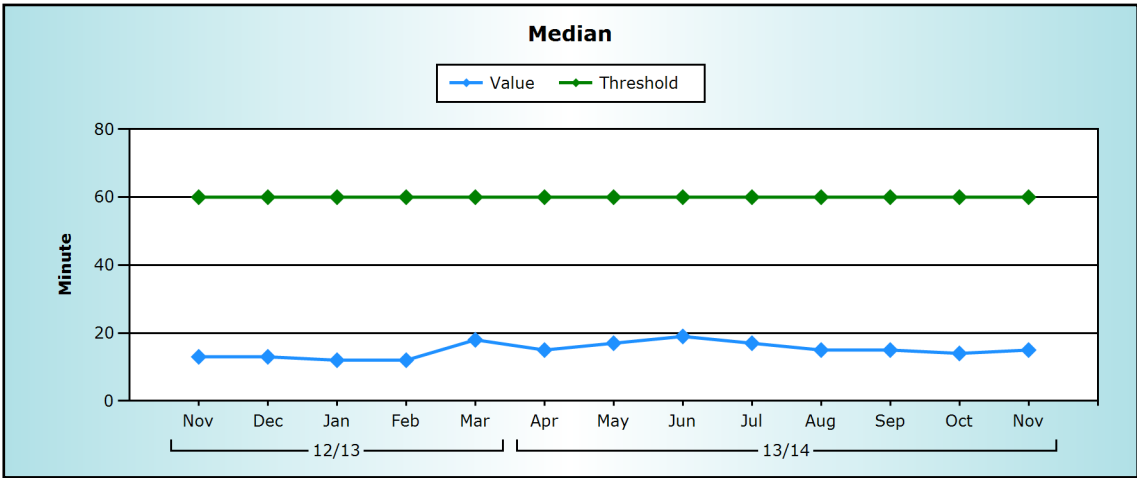
MINOR INJURIES UNIT Time from Arrival to Treatment



Narrative

Description of Data
The time from arrival in MINOR INJURIES UNIT to when a patient is seen by a health professional to diagnose the problem and arrange or start definitive treatment (95th Percentile)

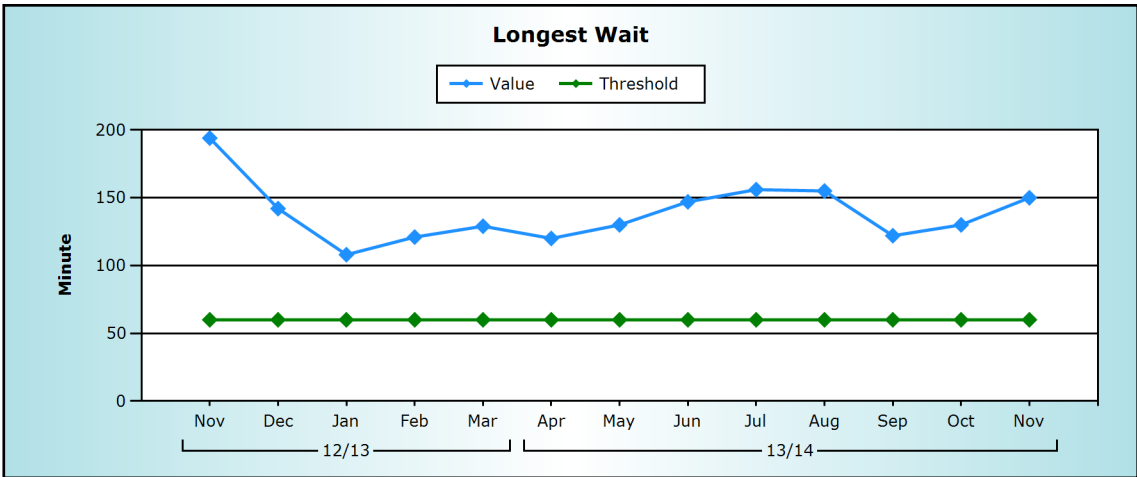
Rate This Month	Compared to Last Month
66	Improved



Narrative
The median time from arrival to treatment in the Minor Injuries Unit rose marginally in November.

Description of Data
The time from arrival in MINOR INJURIES UNIT to when a patient is seen by a health professional to diagnose the problem and arrange or start definitive treatment (Median)

Rate This Month	Compared to Last Month
15	Worse



Narrative

Description of Data
The time from arrival in MINOR INJURIES UNIT to when a patient is seen by a health professional to diagnose the problem and arrange or start definitive treatment (Longest Wait)

Rate This Month	Compared to Last Month
150	Worse