

Review of the Yorkshire and the Humber Fertility Policy

Governing Body meeting

H

9 January 2014

Author(s)/Presenter and title	Will Cleary-Gray, Head of Collaborative Commissioning & Planning
Sponsor	Ian Atkinson, Accountable Officer
Key messages	
<ul style="list-style-type: none"> • In February 2013, NICE published new guidance to the NHS covering fertility treatment. • Key implications for the new policy are extending the age range for IVF down from 23 to 18 and up from 40 to 42 and an emphasis on single embryo transfer. • South Yorkshire and Bassetlaw CCGs offered to undertake a collaborative review of the existing policy on behalf of Yorkshire and the Humber CCGs led by a small review team from Rotherham CCG. • The mandate of the review group was to review eligibility and equity of access and the number of funded cycles was for each CCG to determine locally. 	
Assurance Framework (AF)	
<p>Assurance Framework Number: 1.3, 4.1, 4.2</p> <p>How does this paper provide assurance to the Governing Body that the risk is being addressed Improve patient experience and access to healthcare.</p> <p>Is this an existing or additional control: Existing</p>	
Equality/Diversity Impact	
<p>Has an equality impact assessment been undertaken? Yes</p> <p>Which of the 9 Protected Characteristics does it have an impact on? All</p>	
Public and Patient Engagement	
<p>This is a review of an existing Yorkshire and the Humber policy following newly published NICE guidance. The policy was subject to significant engagement during its initial development. The changes improve the offer to patients and the public.</p>	
Recommendations	
<p>The Governing Body is asked to support the revised commissioning policy for local implementation.</p>	

Review of the Yorkshire and the Humber Fertility Policy

Governing Body meeting

9 January 2014

1. Purpose

The purpose of this paper is to share the output of the review of the Yorkshire and the Humber Specialist Fertility Commissioning policy¹ and seek approval from Governing Body to implement locally following its recommendation by CCGCOM in December 2013.

2. Key Messages

- Specialist Fertility Services are commissioned by CCGs from 1 April 2013.
- In February 2013 NICE published new guidance to the NHS covering fertility treatment².
- Key implications for the new policy are extending the age range for IVF down from 23-18 and up from 40-42 and an emphasis on single embryo transfer.
- South Yorkshire and Bassetlaw CCGs offered to undertake a collaborative review of the existing policy on behalf of Yorkshire and the Humber CCGs led by a small review team from Rotherham CCG.
- The mandate of the review group was to review eligibility and equity of access and the number of funded cycles was for each CCG to determine locally.
- Commissioning of fertility services across the NHS have receive much political and public attention not least as a result of inconsistent eligibility criteria and therefore access and variation in terms of numbers of NHS funded cycles.

3. Background

From April 2013, the responsibility for commissioning Fertility services rests with CCGs. Currently access to those services is governed by a single policy which was developed by the Yorkshire and the Humber Expert Fertility Group in consultation with the public via the SCG and PCT leads. The commissioning policy provides a single approach to eligibility but accepts that individual CCGs are at different positions with implementing the 2004 NICE guidance fully in terms of numbers of cycles. The policy focuses on tertiary fertility services in terms of eligibility but make reference to other elements of the pathway where appropriate.

New NICE guidance was published earlier this year with significant implications for our shared policy.

South Yorkshire and Bassetlaw collaborative commissioning forum agreed to work together to review the existing policy in light of the new NICE guidance and additionally agreed to review the policy on behalf of Yorkshire and the Humber CCGs.

¹ Yorkshire and the Humber Specialised Fertility Commissioning Policy, May 2010.

² Fertility. The assessment and treatment of people with fertility problem. NICE Clinical Guideline 156, February 2013.

Previously the Yorkshire and the Humber Expert Fertility Group provided an expert clinical view and oversight of the policy development and this same group were reconvened to support the current review. The group's membership includes lead clinicians from fertility providers, public health leads and a commissioning lead from each of the sub-regions representing CCGs within their constituent collaboration.

The review group from Rotherham CCG undertook an initial gap analysis of the current policy against the new NICE guidance. The findings were presented to the Yorkshire and the Humber Expert Fertility Group and agreement reached by consensus. A re-draft of the policy was circulated to the group for final comment in October 2013 in preparation for sharing with collaborative commissioning forums. The final draft of the policy was shared with collaborative forums across Yorkshire and the Humber and the policy was endorsed and recommended to CCGs for local implementations.

4. Service information

Tertiary fertility services include a range of interventions (see attached costing sheet) including IUI, ICSI and IVF. They may also include the provision of donor gametes and donor eggs.

Fertility services fall under the 18- week maximum waiting time.

The majority of treatment in the UK is statutorily regulated by the Human Fertility and Embryo Authority (HFEA). The current Yorkshire & Humber policy states that all tertiary providers of fertility services must be licensed with the HFEA in order to be commissioned.

In Yorkshire and Humber there are currently five contracts held in respect of these services. Each of this service operates in line with our agreed regional commissioning policy, eligibility criteria, and service specification (although numbers of cycles remain locally determined by CCGs).

Current Providers across Yorkshire and the Humber:

- Leeds Teaching Hospitals NHS Trust
- Sheffield Teaching Hospitals Foundation Trust
- East Riding Fertility Services
- CARE Sheffield
- CARE Nottingham

5. Key changes to the policy

Within the 2013 NICE clinical guideline on fertility new recommendations state that:

- women <40 years who have not conceived after 2 years of regular unprotected intercourse (previously 3 years) or 12 cycles of artificial insemination are offered 3 full cycles of IVF.
- the minimum age for NHS IVF treatment has been lowered from 23 to 18 years.
- women age 40-42 should receive **one** NHS funded full cycle of IVF (the previous upper limit was 39 years).

The review group did not have any mandate from commissioners to make a recommendation on number of cycles and therefore this is for each CCG to determine based on local priorities.

NICE recommend that women should be informed of the health risks of smoking, high BMI and alcohol consumption before and during pregnancy but stop short of recommending restricting IVF treatment based on these factors. In practice a BMI cut-off of 30 is used locally to restrict secondary care sub-fertility treatment. No restrictions are imposed on smokers, as per the YH SCG policy.

IVF eligibility criteria based on lifestyle should be justified on ethical, clinical, cost-effective and practical grounds. Restrictions may appear justified on the basis that they reduce the risk, and harm reduction for pregnant women and children, and improve the success rate and cost effectiveness of sub-fertility treatment. However such restrictions do not respect individual autonomy, may stigmatise couples, set a precedent for restrictions to other NHS treatments, and may not be practically enforceable (e.g. for occasional smoking).

Ensuring that patients receive information and advice appropriately along the patient pathway is highlighted in the new NIVE guidance. This is particularly important for support with lifestyle advice. Some CCG has taken approaches to supporting patients, referrers and providers by implementing local referral guidelines from primary care and developing referral options.

6. Financial implications

Financial costing were prepared by Sheffield CCG and are based on the NICE costing tool, adjusted to locally sensitive data.

The NICE costing model is based on 42 IVF cycles per 100,000 and an average cost of £2878.00 per cycle. Based on Sheffield data the additional annual cost of implementing this guidance is:

1 cycle	£16,534 per 100,000
2 cycles	£26,842 per 100,000
3 cycles	£34,911 per 100,000

Sheffield CCG currently commissions one full cycle.

7. Recommendations

Governing Body is asked to support the revised commissioning policy for local implementation.

Paper prepared by Will Cleary-Gray, Head of Collaborative Commissioning & Planning

On behalf of Ian Atkinson, Accountable Officer

30 December 2013

Access to infertility treatment

Commissioning Policy
Document
Yorkshire and
Humber

Version 2 Draft 4 October
2013 (Review period January -
March 2016)

Commissioning Policy Statement:

This document represents the commissioning policy of NHS Sheffield Clinical Commissioning Group for the clinical pathway which provides access to tertiary fertility services. It is intended to provide a framework for the commissioning of services for those couples who are infertile and require infertility interventions.

The policy was developed jointly by Clinical Commissioning Groups in the Yorkshire and Humber area and provides a common view of the clinical pathway and criteria for commissioning services which has been adopted by Sheffield CCG..

The policy on funding of tertiary fertility services for individual patients is a policy of this CCG and not part of the shared policy set out in the rest of this document. The number of full IVF cycles currently funded by Sheffield CCG for patients who meet the access criteria set out in the shared policy is (insert number of full cycles currently commissioned). This policy will be updated in accordance with the review period of the policy or earlier should sufficient changes in practice or evidence base require it.

This commissioning Policy has been developed in partnership with the Yorkshire and The Humber Expert Fertility Panel

Panel Members:

Virginia Beckett	Consultant in Reproductive Medicine Bradford Teaching Hospital FT
Helen Brown	Service Manager Sheffield Teaching Hospital FT
Jill Bulmer	Leeds Teaching Hospitals
Will Cleary-Gray	Head of Collaborative Commissioning & Planning Sheffield CCG
Rachel Cutting	Principle Embryologist Sheffield Teaching Hospital FT
Fiona Day	Consultant in Public Health Leeds
Chris Edward (Chair)	Accountable Officer Rotherham CCG
Karen Ellis	Assistant Director Strategic Planning & Commissioning NHS Hull & East Riding of Yorkshire CCG
Nagpal Hoysal	Consultant in Public Health Rotherham
Steve Maguiness	Consultant in Reproductive Medicine Hull and East Yorkshire Hospitals FT
John Robinson	Hull and east Yorkshire Hospitals FT
Anthony Rutherford	Leeds Teaching Hospitals
Adel Shaker	Care Sheffield
Vinay Sharma	Consultant Gynaecologist Leeds Teaching Hospital
Jonathan Skull	Consultant in Reproductive Medicine Sheffield Teaching Hospital FT
Simon Thornton	Consultant in Reproductive Medicine Care Fertility Sheffield

Conflicts of Interest

None stated by the authors.

For Further Information about this policy please contact:

Will Cleary-Gray

will.cleary-gray@nhs.net

Joanne Martin

Joanne.martin@rotherhamccg.nhs.net

Contents

1.	Aim of paper	6
2.	Background	6
3.	Clinical Effectiveness	8
4.	Cost effectiveness	8
4.3	Risks	8
5.	Description of the treatment	8
5.1	Principles of care.....	8
5.2	The Care Pathway	9
5.3	Definition of a full cycle	10
5.4	Frozen Embryo Transfers	10
5.5	Abandoned Cycles	11
5.6	IUI and DI	11
5.7	Donor Gametes.....	11
5.8	Gametes and Embryo Storage	11
5.9	HIV/HEP B/ HEP C	11
5.10	Surrogacy	12
5.11	Single Embryo Transfer	12
5.12	Counselling and Psychological Support.....	12
5.13	Sperm washing and pre-implantation diagnosis.....	12
5.14	Service Providers	12
6.0	Eligibility Criteria for Treatment	13
6.1	Application of Eligibility Criteria.....	13
6.2	Overarching Principles	13

6.3	Existing Children	13
6.4	Female Age	13
6.5	Female BMI	14
6.6	Reversal of sterilisation.....	14
6.7	Previous self-funded couples.....	14
6.8	Length of relationship.....	14
6.9	Welfare of the child	14

Appendix A Abrieveiations

Appendix B Glossary

1. Aim of paper

- 1.1 This document represents the commissioning policy for tertiary fertility services for adults registered with a Clinical Commissioning Group (CCG) in the Yorkshire and Humber region.
- 1.2 The policy aims to ensure that those most in need and able to benefit from NHS funded treatment are given equitable access to tertiary fertility services across the Yorkshire and Humber Area, by identifying the clinical care pathway and relevant access criteria.

2. Background

- 2.1 On April 1st 2013 Clinical Commissioning Groups (GCGs) across the Yorkshire and the Humber regions adopted the existing Yorkshire and the Humber Fertility policy¹. In February 2013 NICE published revised guidance² which updates previous NICE guidance published in 2004³.
- 2.2 CCGs across the Yorkshire and the Humber agreed to work collaboratively to update the existing policy in light of the new NICE guidance and changing commissioning landscape.
- 2.3 In this policy document infertility is defined:

For all couples: The presence of known reproductive pathology.

For heterosexual couples: The failure to conceive after regular unprotected sexual intercourse for a period of 2 years in the absence of known reproductive pathology.

For same-sex couples (and other couples for whom convention methods of conception are impossible or very difficult): The failure to conceive after twelve rounds of donor or partner insemination, of which at least six will be carried out through IUI, in the absence of any known reproductive pathology. Six rounds of IUI treatment are expected to be self-funded in these circumstances.

For couples where ovulation can be induced with simple techniques such as clomiphene, these patients are not regarded as infertile on this basis alone and therefore would not meet the eligibility criteria for access to IVF at that stage.

- 2.4 Fertility problems are common in the UK and it is estimated that they affect 1 in 7 couples with 80% of couples in the general population conceiving within 1 year, if :

¹ Yorkshire and the Humber Commissioning Policy for Fertility Services, 2010.

² Fertility: Assessment and treatment for people with fertility problems 2012, NICE Clinical Guideline 156.

³ Fertility: Assessment and Treatment for people with fertility problems 2004, NICE Clinical Guideline 11.

- The woman is aged under 40 years and
- They do not use contraception and have regular sexual intercourse (NICE 2013)

Of those who do not conceive in the first year about half will do so in the second year (cumulative pregnancy rate is 90%).

The remaining 10% of couples will be unable to conceive without medical intervention and are therefore considered infertile.

2.5 In 25% of infertility cases the cause cannot be identified. However, it is thought that in remaining couples about a 3rd of cases are due to the male partner being unable to produce or ejaculate sufficient normal sperm, a third are due to problems found with the female partner such as:

- Failure to ovulate
- Blockage to the passage of the eggs

10% are due to problems with both partners.

2.6 The most recent DH costing tool estimates that there are 98 attendances at a fertility clinic for every 10,000 head of population. In Yorkshire and the Humber, this could range between 4000 and 5000 attendances per year which would result in between 1450 couples , likely to be assessed as eligible for IVF treatment

2.7 Tertiary fertility services include IUI, ICSI and IVF. They may also include the provision of donor sperm and donor eggs. The majority of treatment in the UK is statutory regulated by the Human Fertility and Embryo Authority (HFEA). All tertiary providers of fertility services must be licensed with the HFEA in order to be commissioned under this policy.

2.8 NICE Clinical Guidelines 156 (2013) covering infertility recommends that:

Up to three full cycles of IVF will be offered to eligible couples where the woman is aged between 18 and 39 and 1 cycle for eligible couples where the woman is aged between 40 – 42.

2.9 In addition to commissioning effective healthcare, CCGs are required to ensure that resources are allocated equitably to address the health needs of the population. Therefore CCGs will need to exercise discretion on the number of cycles of IVF that they will fund up to the maximum recommended by NICE.

3. Clinical Effectiveness

It is considered to be clinically effective to offer up to 3 stimulated cycles of IVF treatment to couples in which the woman is aged between the age of 18 – 39 and 1 cycle where the woman is aged between 40 – 42 and who have an identified cause for their infertility or who have infertility of at least 2 years duration.

4. Cost effectiveness

4.1 Evidence shows (NICE 2013) that as the woman gets older the chances of successful pregnancy following IVF treatment falls. In light of this, NICE have recommended that the most cost effective treatment is for women aged 18 – 42 who have known or unknown fertility problems.

4.2 As research within this field is fast moving, new interventions and new evidence needs to be considered on an on-going basis to inform commissioning decisions.

4.3 Risks

Fertility treatment is not without risks. A summary of potential risks are outlines below:

Risks

- There are risks of multiple pregnancies during fertility treatment, which is associated with a higher morbidity and mortality rate for mothers and babies.
- Women who undergo fertility treatment are at slightly higher risk of ectopic pregnancy.
- Ovarian hyper stimulation, which is a potentially fatal condition, is also a risk. The exact incidence of this has not been determined but the suggested number is between 0.2 – 1% of all assisted reproductive cycles.
- Current research shows no cause for concern about the health of children born as the result of assisted reproduction.
- A possible association between ovulation induction therapy and ovarian cancer in women who have undergone treatment is uncertain.
- Further research is needed to assess the long term effects of ovulation induction agents.

5. Description of the treatment

5.1 Principles of care

5.1.1 Couples who experience problems in conceiving should be seen together because both partners are affected by decisions surrounding investigation and treatment.

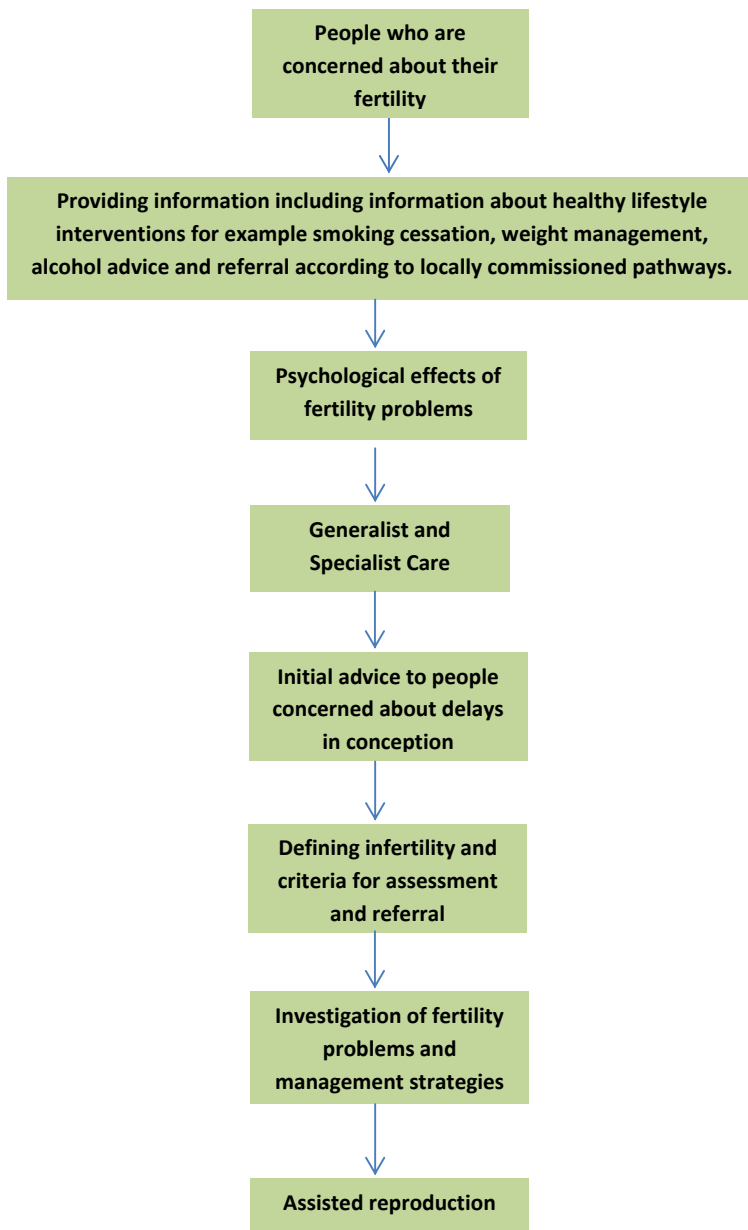
5.1.2 People should have the opportunity to make informed decisions regarding their care and treatment via access to evidence-based information. These choices should be recognised as an integral part of the decision-making process.

Information should be provided in the following formats:

- Face to face discussions with couples
- Written information and advice
- Culturally sensitive
- Be sensitive to those with additional needs e.g. physical or cognitive, or sensitive disabilities, or those who do not speak English.

5.1.3 As infertility and infertility treatments have a number of psycho-social effects on couples, access to psychological support prior to and during treatment should be considered as integral to the care pathway.

5.2 The Care Pathway (fig, 1)



5.2.1 Treatment for infertility problems may include counselling, lifestyle advice, drugs treatments, surgery and assisted conception techniques such as IVF.

The care pathway (fig 1) begins in primary care, where the first stage of treatment is general lifestyle advice and support to increase a couples chances of conception happening without the need for medical intervention.

If primary care interventions are not effective, initial assessment such as semen analysis will take place. Following these initial diagnostics it may be appropriate for the couple to be referred to secondary care services where further investigation and potential treatments will be carried out, such as, hormonal therapies to stimulate ovulation. It may be appropriate at this stage for primary care clinician to consider and discuss the care pathway and potential eligibility for IVF. It may also be appropriate for healthy lifestyle interventions to be discussed.

If after secondary care interventions are not successful and the couple fulfil the eligibility criteria in section 6.0, they may then be referred through to tertiary care for assessment for assisted conception techniques, such as, IVF, DI, IUI, ICSI.

5.2.2 IVF involves:

- The use of drugs to switch the natural ovulatory cycle.
- Induction of ovulation with other drugs
- Monitoring the development of the eggs in the ovary
- Ultrasound guided egg collection from the ovary
- Processing of sperm
- Production of a fertilized embryo from sperm and egg cells in the laboratory
- Use of progesterone to make the uterus receptive to implantation
- Transfer of selected embryos and freezing of those suitable but not transferred

5.3 Definition of a full cycle

Full Cycle is the term used to define a full IVF treatment; it should include 1 episode of ovarian stimulation and the transfer of any resultant fresh and frozen embryo(s) (NICE 2013). Or

The definition of a single full treatment cycle is the replacement of a fresh embryo and subsequent sequential replacement of all frozen embryos derived from the cycle until pregnancy is successful or harvested embryos have been exhausted. (Not expected to be more than 4)

Adherence in this way to the NICE guidelines would encourage and not disadvantage patients

5.4 Frozen Embryo Transfers

Embryos that are not used during the fresh transfer should be quality graded using the UK NEQAS embryo morphology scheme and may be frozen for subsequent use within the cycle.

5.5 Abandoned Cycles

An abandoned IVF/ICSI cycle is defined as the failure of egg retrieval, usually due to lack of response (where less than 3 mature follicles are present) or excessive response to gonadotrophins; failure of fertilisation and failure of cleavage of embryos. Beyond this stage, a cycle will be counted as complete whether or not a transfer is attempted.

5.6 IUI and DI

Up to three cycles of IUI and DI (Stimulated or non-stimulated) will be provided for couples with unexplained fertility, mild endometriosis or mild male factor. They will then access IVF treatment if appropriate.

Up to six cycles (dependent on availability of donor sperm) will be offered for couples with male azoospermia donor Sperm

5.7 Donor Gametes

The cost of donor sperm is included in the funding of treatment for which it is required which is to be commissioned in accordance with this policy and the funding policy of the CCG.

Patients eligible for treatment with donor eggs will be placed on the waiting list for treatment with donor eggs. Unfortunately, the availability of donor eggs remains severely limited in the UK. There is therefore no guarantee that eligible patients will be able to proceed with treatment. Patients will be placed on the waiting list for an initial period of 3 years, after which they will be reviewed to assess whether the eligibility criteria are still met.

5.8 Gametes and Embryo Storage

The cost of egg and sperm storage will be included in the funding of treatment for which it is required which is to be commissioned in accordance with this policy and the funding policy of the CCG. Storage will be funded for a maximum of 3 years or until 6 months post successful live birth, whichever is the shorter.

Any embryos frozen prior to implementation of this policy will be frozen for a maximum period of 3 years from the date of policy adoption.

Any embryos storage funded privately prior to the implementation of this policy will remain privately funded.

5.9 HIV/HEP B/ HEP C

People undergoing IVF treatment should be offered testing for HIV, hepatitis B and hepatitis C (NICE 2013).

People found to test positive for one or more of HIV, hepatitis B, or hepatitis C should be offered specialist advice and counselling and appropriate clinical management (NICE 2013).

5.10 Surrogacy

Any costs associated with use of a surrogacy arrangement will not be covered by funding from CCGs, but we will fund provision of fertility treatment (IVF treatment and storage) to identified (fertile) surrogates, where this is the most suitable treatment for a couple's infertility problem and the couple meets the eligibility criteria for tertiary fertility services set out in this policy.

5.11 Single Embryo Transfer

Please refer to 5.3 for definition of a full cycle.

Multiple births are associated with greater risk to mothers and children and the HFEA therefore recommends that steps are taken by providers to minimize multiple births. This is currently achieved by only transferring a single embryo for couples who are at high risk.

We support the HFEA guidance on single embryo transfer and will be performance monitoring all tertiary providers to ensure that HFEA targets are met. All providers are required to have a multiple births minimisation strategy. The target for multiple births was set at an upper limit of 24% of all pregnancies in 2009 and will progressively reduce to 10%.

5.12 Counselling and Psychological Support

As infertility and infertility treatment has a number of negative psycho social effects access to counselling and psychological support should be offered to the couple prior to and during treatment.

5.13 Sperm washing and pre-implantation diagnosis

Sperm washing and pre-implantation genetic diagnosis are not treatments for infertility and fall outside the scope of this policy.

5.14 Service Providers

Providers of fertility treatment must be HFEA registered and comply with any service specification drawn up by Yorkshire and the Humber CCG Com Commissioning Group.

6.0 Eligibility Criteria for Treatment

6.1 Application of Eligibility Criteria

Eligibility criteria should apply at the point patients are referred to tertiary care (with the exception of 6.9, which should be undertaken within tertiary care). Couples must meet the definition of infertility as described in section 2.3.

6.2 Overarching Principles

6.2.1 Eligibility criteria should apply equally to all assisted conception treatments (IUI, IVF, ICSI).

6.2.2 All clinically appropriate individuals/couples are entitled to medical advice and investigation. Couples may be referred to a secondary care clinic for further investigation. Only couples meeting the eligibility criteria should be referred to tertiary care.

6.2.3 Treatment limits are per couple and per individual. Referrals should be as a couple and include demographic information for both partners in heterosexual and same sex couples.

6.3 Existing Children

Neither partner should have any living children (this includes adopted children but not fostered) from that or any previous relationship.

6.4 Female Age

Age as a criterion for access to fertility treatments is applied in line with the NICE Clinical Guideline on Fertility which is based on a comprehensive review of the relationship between age and the clinical effectiveness of fertility treatment.

The woman intending to become pregnant must be between the ages of 18 – 42 years. No new cycle should start after the woman's 43rd birthday. Referrers should be mindful of the woman's age at the point of referral and the age limit for new cycles.

Women aged 40–42 years who have not conceived after 2 years of regular unprotected intercourse or 12 cycles of artificial insemination (where 6 or more are by intrauterine insemination), will receive 1 full cycle of IVF, with or without ICSI, provided the following 3 criteria are fulfilled:

- they have never previously had IVF treatment
- there is no evidence of low ovarian reserve
- there has been a discussion of the additional implications of IVF and pregnancy at this age.

Where investigations show there is no chance of pregnancy with expectant management and where IVF is the only effective treatment, woman aged between 40-42 should be referred directly to a specialist team for IVF treatment.

6.5 Female BMI

The female patient's BMI should be between 19 and 30 prior to referral to tertiary services. Patients with a higher BMI should be referred for healthy lifestyle interventions including weight management advice. Patients should not be re-referred to tertiary services until their BMI is within the recommended range.

6.6 Reversal of sterilisation

We will not fund IVF treatment for patients who have been sterilised or have unsuccessfully undergone reversal of sterilisation.

6.7 Previous self-funded couples

Previous cycles, whether self-funded or NHS funded will be taken into consideration when assessing a couples ability to benefit from treatment and will count towards the total of 3 full cycles that may be offered by the NHS.

6.8 Length of relationship

Cohabiting couples must have been in a stable relationship for a minimum of 2 years to be entitled to treatment.

6.9 Welfare of the child

The couple should be assessed as meeting the requirement contained within the HFEA Appendix entitled 'Welfare of the child'.

Appendix A

Abbreviations

Abbreviations used	
<i>BMI</i>	Body Mass Index
DI	Donor Insemination
GP	General Practitioner
HFEA	Human Fertilisation and Embryology Authority
ICSI	Intracytoplasmic sperm injection
IUI	Intra-uterine insemination
IVF	In vitro fertilisation
NICE	National Institute of Clinical Excellence
<i>CCG</i>	Clinical Commissioning Group

Appendix, B

Contents

Term	Definition	Further information
BMI	The healthy weight range is based on a measurement known as the Body Mass Index (BMI) . This can be determined if you know your weight and your height. This is calculated as your weight in kilograms divided by the square of your height in metres. In England, people with a body mass index between 25 and 30 are categorised as overweight, and those with an index above 30 are categorised as obese.	BBC Healthy Living http://www.bbc.co.uk NHS Direct http://www.nhsdirect.nhs.uk
ICSI	Intra Cytoplasmic Sperm Injection (ICSI): Where a single sperm is directly injected into the egg.	Glossary, HFEA http://www.hfea.gov.uk
IUI	Intra Uterine Insemination (IUI): Insemination of sperm into the uterus of a woman.	As above
IVF	In Vitro Fertilisation (IVF): Patient's eggs and her partner's sperm are collected and mixed together in a laboratory to achieve fertilisation outside the body. The embryos produced may then be transferred into the female patient.	As above
DI	Donor Insemination (DI): The introduction of donor sperm into the vagina, the cervix or womb itself.	As above

NHS Sheffield CCG Equality Impact Assessment 2013

Title of policy or service	Access to infertility treatment	
Name and role of officers completing the assessment	Elaine Barnes, E&D Manager, Will Cleary-Gray, Head of Collaborative Commissioning & Planning.	
Date assessment started/completed	18 th October 2013	6 th November 2013

1. Outline	
<p>Give a brief summary of your policy or service</p> <ul style="list-style-type: none"> • Aims • Objectives • Links to other policies, including partners, national or regional 	<p>This is the commissioning policy for tertiary fertility service for adults registered with a Clinical Commissioning Group (CCG) in the Yorkshire and Humber region and has been developed in partnership with the Yorkshire and The Humber Expert Fertility Panel.</p> <p>In February 2013 NICE published revised guidance which updates previous NICE guidance published in 2004. On April 1st 2013 Clinical Commissioning Groups (GCGs) across the Yorkshire and the Humber regions adopted the existing Yorkshire and the Humber Fertility policy</p> <p>CCGs across the Yorkshire and the Humber agreed to work collaboratively to update the existing policy in light of the new NICE guidance.</p> <p>The aims of this policy is to ensure that those most in need and able to benefit from</p>

NHS funded treatment are given equitable access to tertiary fertility services across the Yorkshire and Humber Area.

2. Gathering of Information

This is the core of the analysis; what information do you have that indicates the policy or service might *impact on protected groups, with consideration of the General Equality Duty.*

	What key impact have you identified?			What action do you need to take to address these issues?	What difference will this make?
	Positive Impact	Neutral impact	Negative impact		
Human rights					<p>The CCG has a duties under the Equality Act 2010 to:</p> <p>(a)eliminate discrimination, harassment, victimisation and any other conduct that is prohibited by or under this Act;</p> <p>(b)advance equality of opportunity between persons who share a relevant protected characteristic and persons who do not share it;</p> <p>(c)foster good relations between persons who share a relevant protected characteristic and persons who do not share it. It also has responsibilities under the Public Sector Equality Duty to have due regard to the need to advance equality of opportunity.</p> <p>Overall the policy will have a positive impact upon all the 9 protected characteristics.</p>
Age	x				
Carers					
Disability	x				
Sex	x				
Race					
Religion or belief	x				
Sexual orientation	x				
Gender reassignment					
Pregnancy and maternity	x				
Marriage and civil partnership (only eliminating discrimination)	x				
Other relevant group					

					<p>This commissioning policy as a whole aims to provide equal access and to support all heterosexual and same-sex couples, cohabiting, married or in civil partnerships who meet the eligibility criteria to achieve conception who have infertility.</p> <p>As stated in NICE 2013 guidance all couples without known reproductive pathology are required to test their fertility and meet a threshold definition of unexplained infertility before they will be eligible for funded tertiary treatment.</p> <p>For couples that do not have identified fertility pathology preventing them from conceiving there are two options available to enable them to test their fertility to access tertiary services:</p> <p>For couples where conventional methods of conception is an option a pathway of unprotected sex for a period of 2 years is followed.</p> <p>For couples where conventional methods of conception is not an option (a pathway of unprotected sex is not an option); in order to support these couples to be able to access tertiary fertility services the policy enables couples to:</p> <ul style="list-style-type: none"> • demonstrate infertility (in the absence of pathology or conventional unprotected
--	--	--	--	--	---

					<p>sex for a period of 2 years) by failing to conceive after 12 rounds of insemination of which 6 should be IUI and self-funded</p> <p>The requirement to self-fund will have an adverse financial impact on same-sex couples and heterosexual couples who cannot have conventional intercourse but can reasonably be expected to attempt conception. It is likely that the number of same-sex couples affected is likely to be proportionately higher. It is also recognised that for same-sex couples there are innate biological issues which affect the couples' own resources to access the policy.</p> <p>This policy relates to access to infertility treatment, i.e. tertiary services for those who have identified fertility problems (whether known reproductive pathology, physical disability or unexplained fertility as define in the NICE 2013 guidance. The CCGs consider that NHS financial resources in this area should be directed to meeting the medical needs of those with identified fertility problems. If the CCG were to fund IUI for couples who did not have identified fertility problems, significant NHS resources would be being spent on treatment for individuals who do not have (and proportionality are not likely to have) an identified fertility problem which would require tertiary treatment on the grounds of infertility. The CCGs have also considered discriminating against heterosexual couples in this regard.</p>
--	--	--	--	--	--

					<p>The CCG considers that appropriate focussing of scarce NHS resources is a legitimate aim, and that not providing funding of IUI treatment in these circumstances is a proportionate means of achieving that aim having regard to the rest of the policy and broad access for all couples with identified fertility problems. The innate barriers to conception are known in same-sex couples and are therefore something that can be planned for in advance. Alternative restrictions would involve reducing funding to individuals with identified fertility problems (in heterosexual, same-sex female and same-sex male couples) or other clinical areas and the CCGs do not consider that funding this treatment outweighs other demands on NHS resources.</p> <p>CCGs will always consider exceptional cases on an individual basis via their Individual Funding Request Process.</p> <p>Age as a criterion for access to fertility treatments is applied in line with the NICE Clinical Guideline on Fertility which is based on a comprehensive review of the relationship between age and the clinical effectiveness of fertility treatment.</p> <p>Information on fertility services will be provided in wide range of format to meet the diverse needs of couples.</p> <ul style="list-style-type: none"> • Face to face discussions with couples • Written information and advice
--	--	--	--	--	---

					<ul style="list-style-type: none"> • Culturally sensitive • Be sensitive to those with additional needs e.g. physical or cognitive, or sensitive disabilities, or those who do not speak English.
--	--	--	--	--	---

Please provide details on the actions you need to take below.

3. Action plan				
Issues identified	Actions required	How will you measure impact/progress	Timescale	Officer responsible
All CCGs are required to ensure that resources are allocated equitably to address the health needs of the population.	On an annual basis, each CCG are required to do an audit of the fertility service to ensure that it is accessible to all those who require it and in line with the commissioning policy.	Service are equitable to all who require it.	Annually	Each CCG

4. Monitoring, Review and Publication			
When will the proposal be reviewed and by whom?			
Lead Officer		Review date:	

Once complete please forward to your Equality & Diversity lead Elaine Barnes via email elaine.barnes3@nhs.net for Quality Assurance