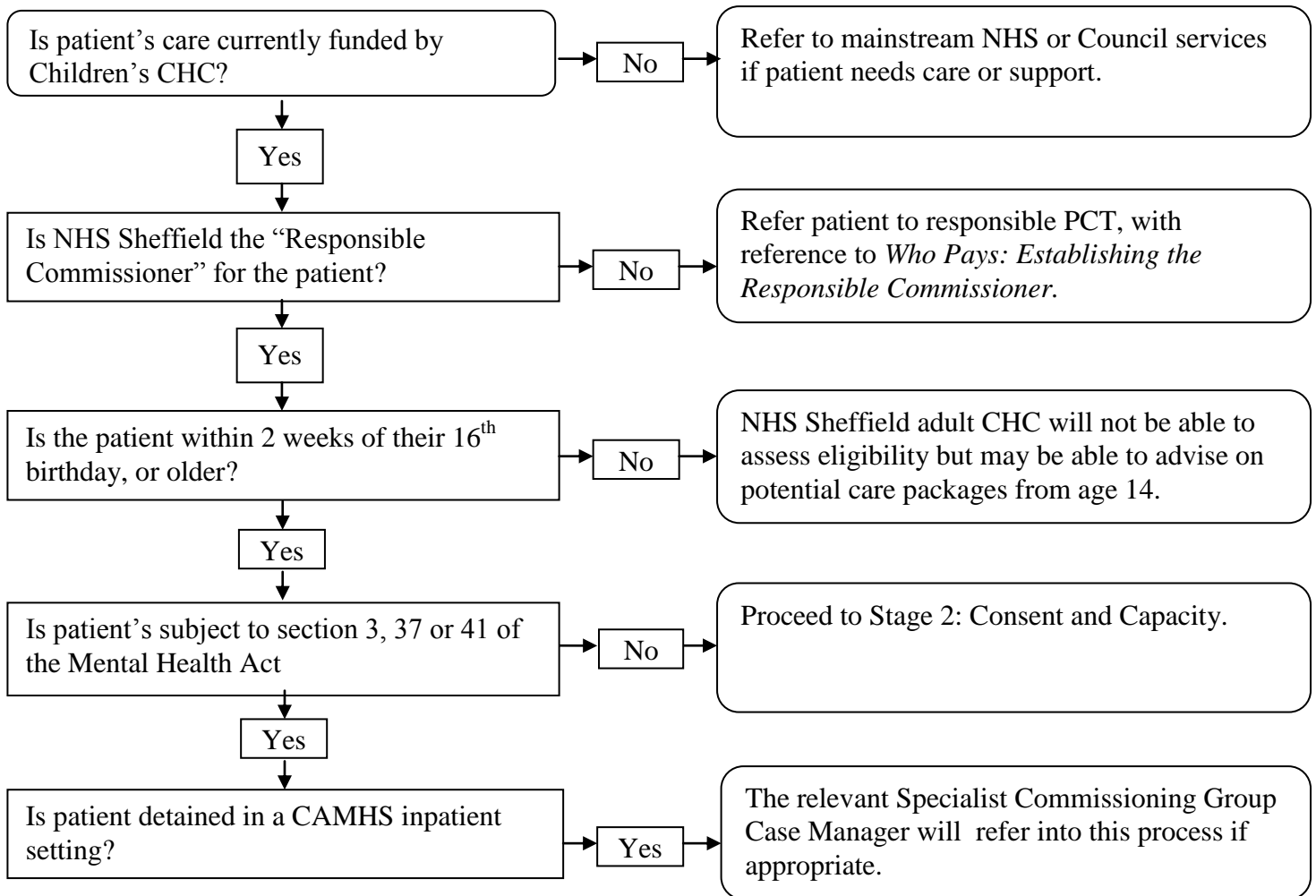


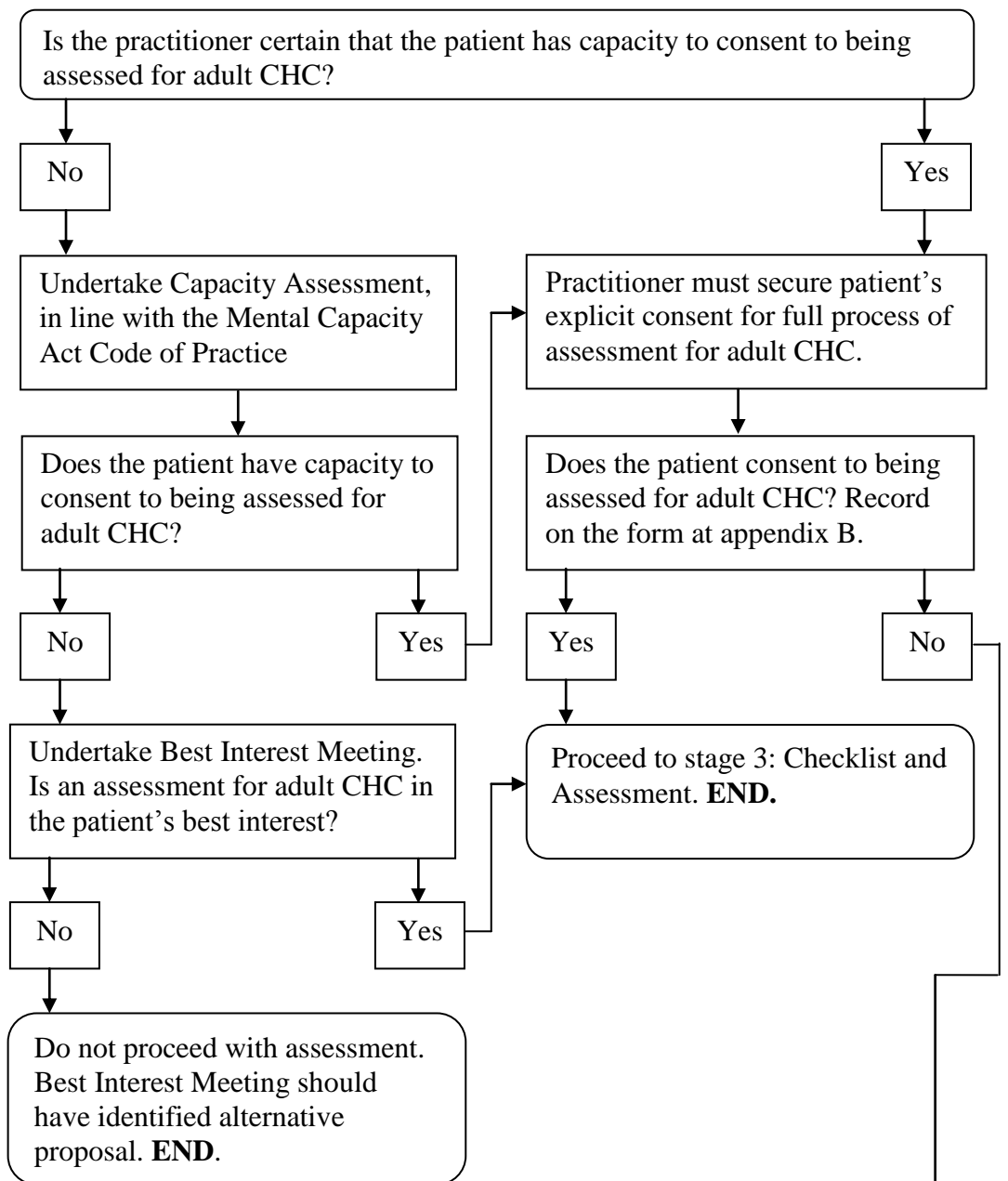
**Guidance for Practitioners: Young People in Transition:  
Assessment for Adult Continuing Healthcare: Appendix A**

**Stage 1: When to refer for assessment for Adult Continuing Healthcare**



**Guidance for Practitioners: Young People in Transition:  
Assessment for Adult Continuing Healthcare: Appendix A**

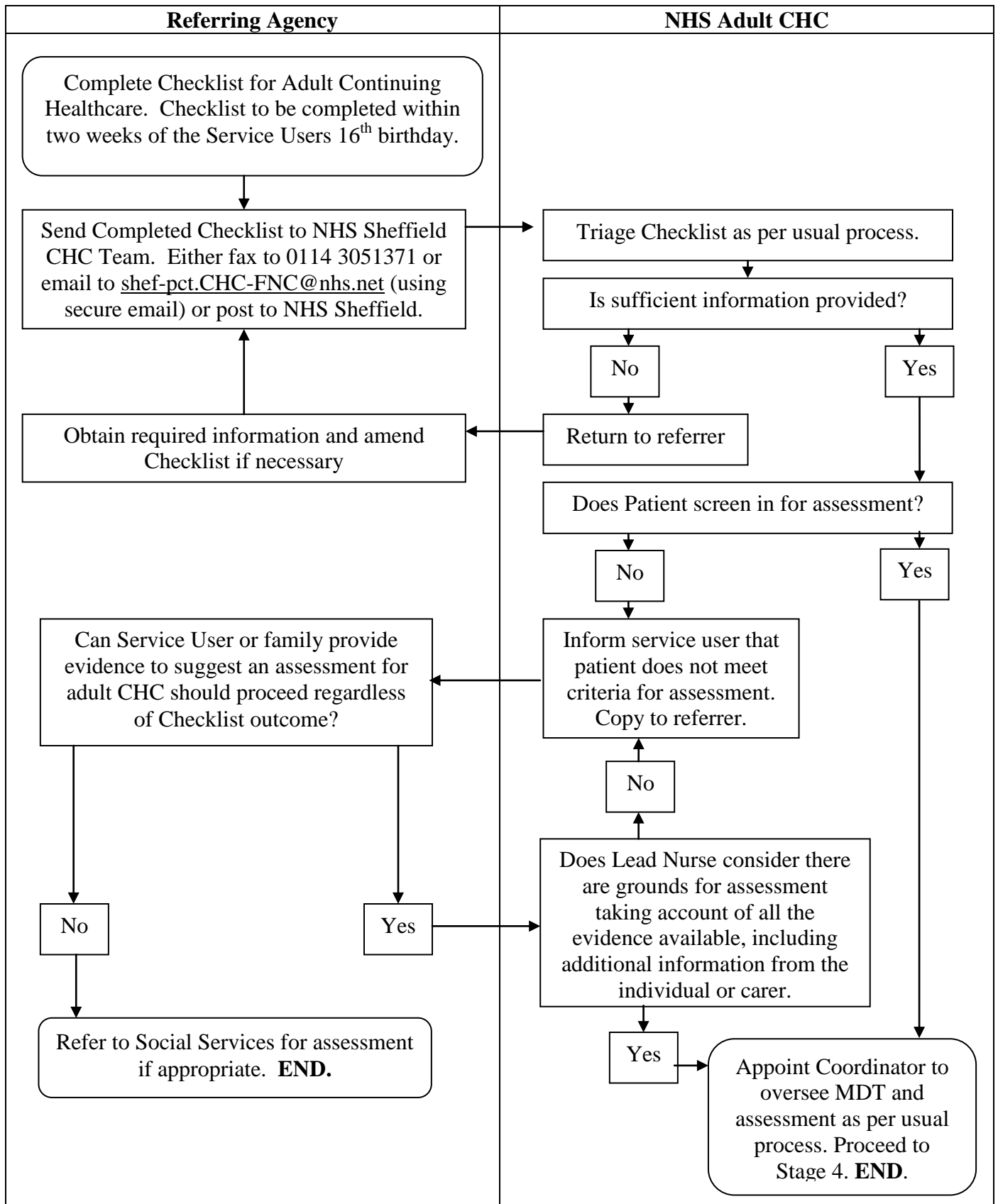
**Stage 2: Consent and Capacity**



If an individual does not consent to assessment of eligibility for NHS continuing healthcare, the potential effect this will have on the ability of the NHS and the LA to provide appropriate services should be carefully explained to them. The fact that an individual declines to be considered for NHS continuing healthcare does not, in itself, mean that an LA has an additional responsibility to meet their needs, over and above the responsibility it would have had if consent had been given. Where there are concerns that an individual may have significant ongoing needs, and that the level of appropriate support could be affected by their decision not to give consent, the appropriate way forward should be considered jointly by the PCT and the LA, taking account of each organisation's legal powers and duties. (Taken from The National Framework for Continuing Healthcare). **END.**

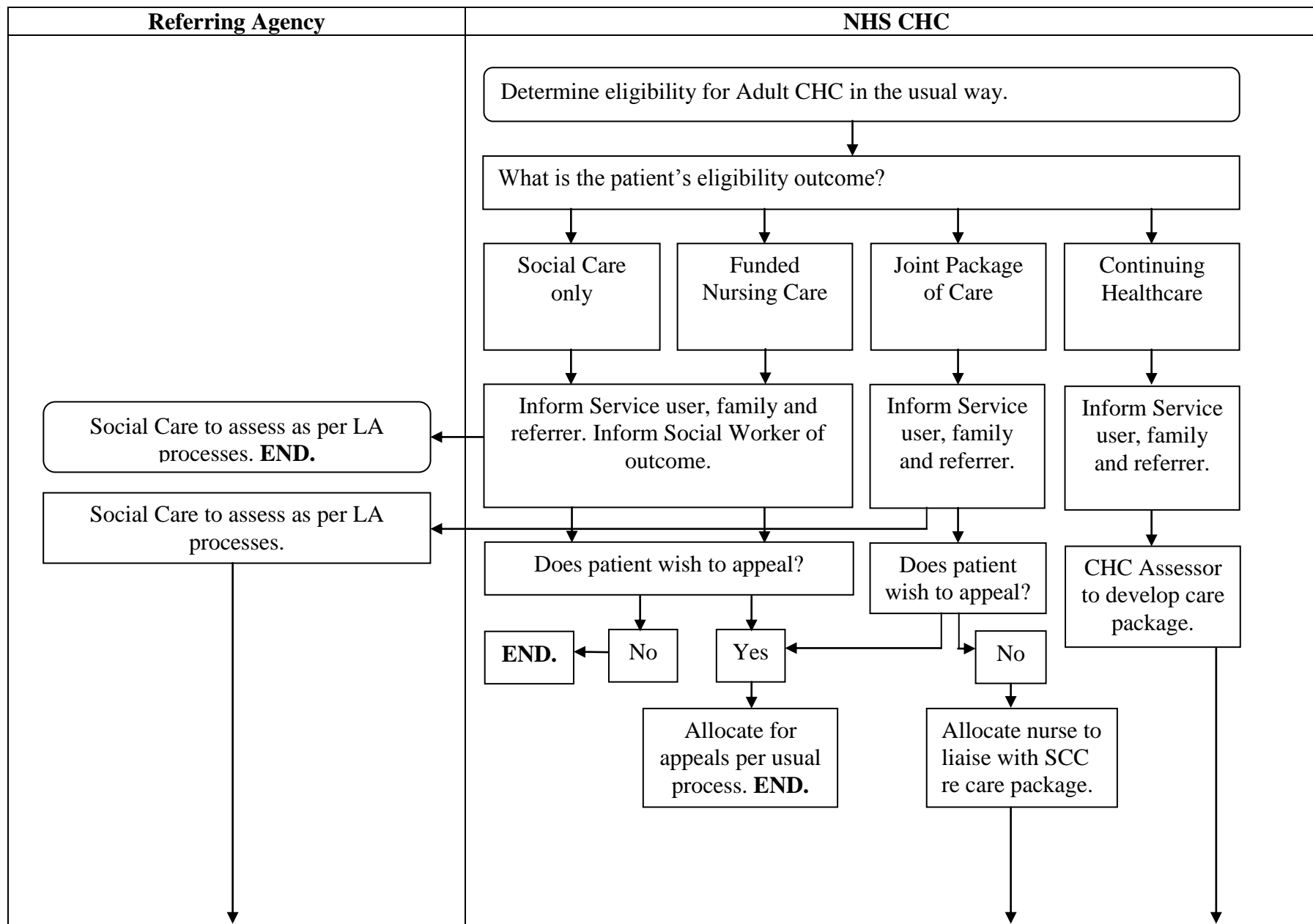
**Guidance for Practitioners: Young People in Transition:  
Assessment for Adult Continuing Healthcare: Appendix A**

**Stage 3: Checklist and Assessment**



**Guidance for Practitioners: Young People in Transition:  
Assessment for Adult Continuing Healthcare: Appendix A**

**Stages 4 and 5: Determining Eligibility and Developing an Offer of a Package of Care**



**Guidance for Practitioners: Young People in Transition:  
Assessment for Adult Continuing Healthcare: Appendix A**

