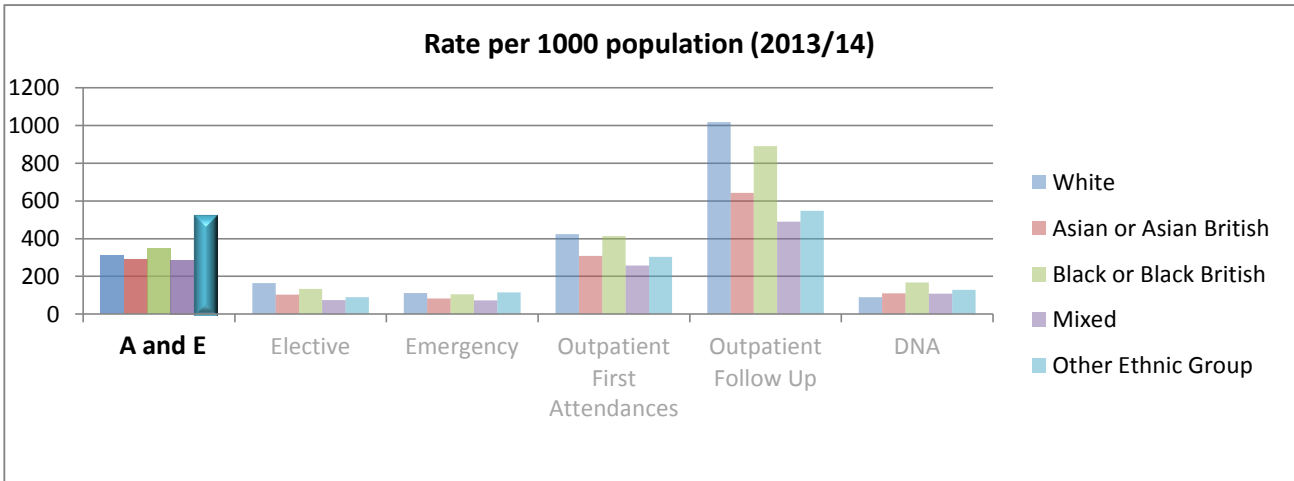


Equality and Diversity Trend Report 2015



Sheffield CCG is committed to making sure that equality and diversity is a priority when planning and commissioning local health care. The Equality and Diversity Monitoring report (available on our website) gives the profile of our patients and local population for the financial year 2013/14 to help us understand the needs of our patients and to make sure that everyone receives high quality services. Using the rate per 1000 population chart from this original report, we have chosen three areas to investigate further by looking at their activity over a three year period. Broad ethnic groups used in this report are based on those from the 2011 Census.

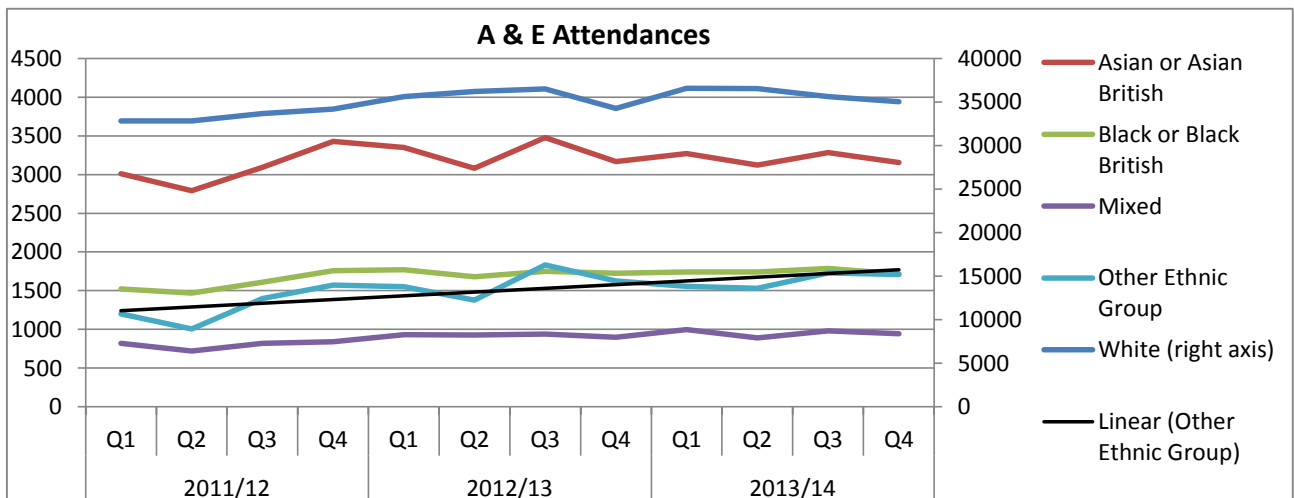
1. A&E attendance rate per 1000 population - Other Ethnic Group



14.1% of A&E activity had no ethnicity stated. Of those with ethnicity recorded, the Other Ethnic Group had the highest A&E attendance rate per 1000 population, as highlighted on the chart above.

As the rate per 1000 population is calculated using the 2011 Census we are unable to provide a trend for rate per 1000 population over three years as the population we have is at a fixed point in 2011.

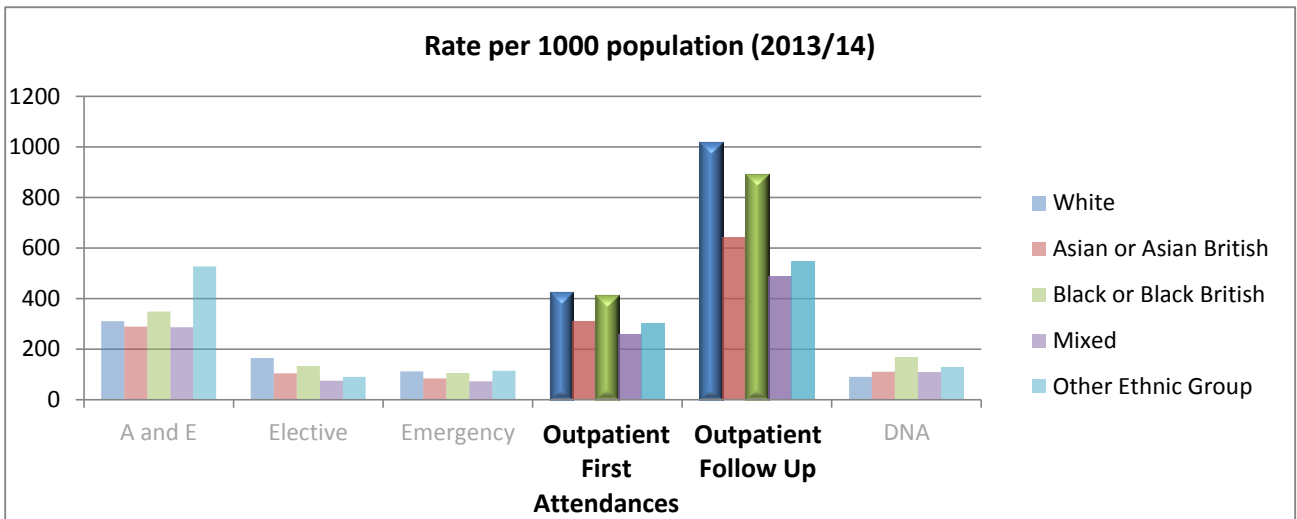
Instead we look at the total number of attendances at A&E over a three year period.



As the White ethnic group is larger than the others it has been plotted on the right axis to allow for easier comparison of trends between all ethnic groups. If it was plotted on the same axis as the others the scale would be too large to see the smaller ethnic groups in any detail.

There has been an increase in the number of A & E attendances for the Other Ethnic Group since 2011. This increase is the fastest of all ethnic groups and may be related to a possible underlying increase in the Other Ethnic Group population.

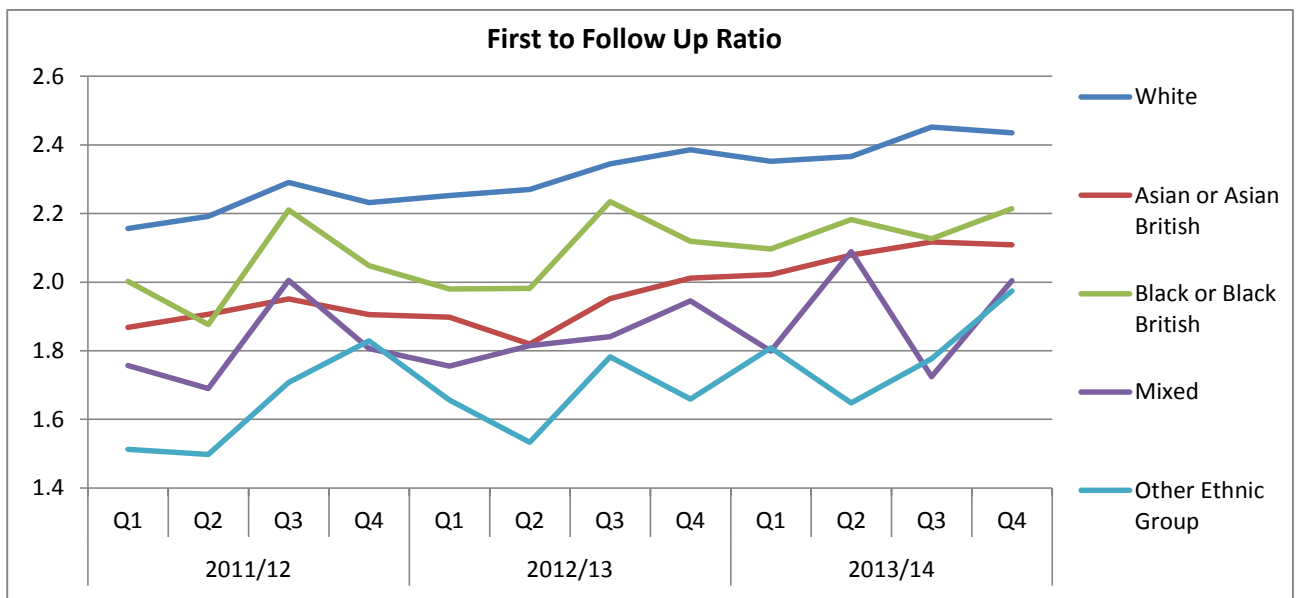
2. Outpatient First to Follow Up ratio - Black/Black British and White



9.3% of Outpatient First and 5.1% of Outpatient Follow up attendances have no ethnicity stated.

Of those with ethnicity recorded, the Black/Black British and White ethnic group have a similar Outpatient First attendance per 1000 population rate but Black/Black British have fewer Outpatient Follow Up Attendances per 1000 population, as shown on the chart above.

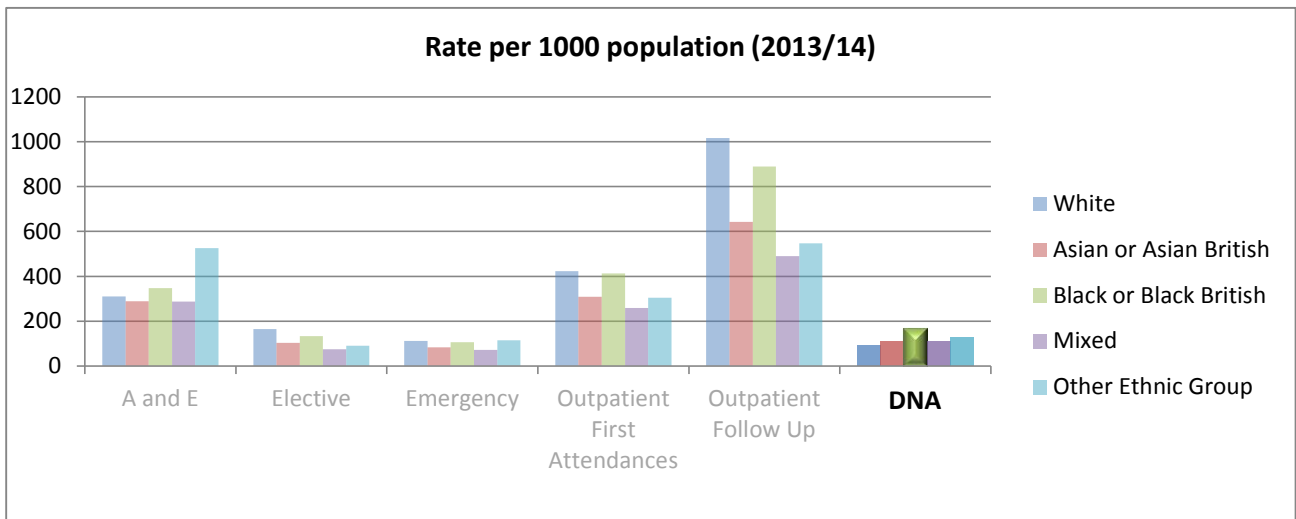
We can use the First to Follow Up ratio to look at this trend over a three year period.



The White ethnic group has a consistently higher first to follow up ratio than all other ethnic groups.

The Black/Black British ethnic group's first to follow up ratio has risen over the three years, in line with the White ethnic group's increase.

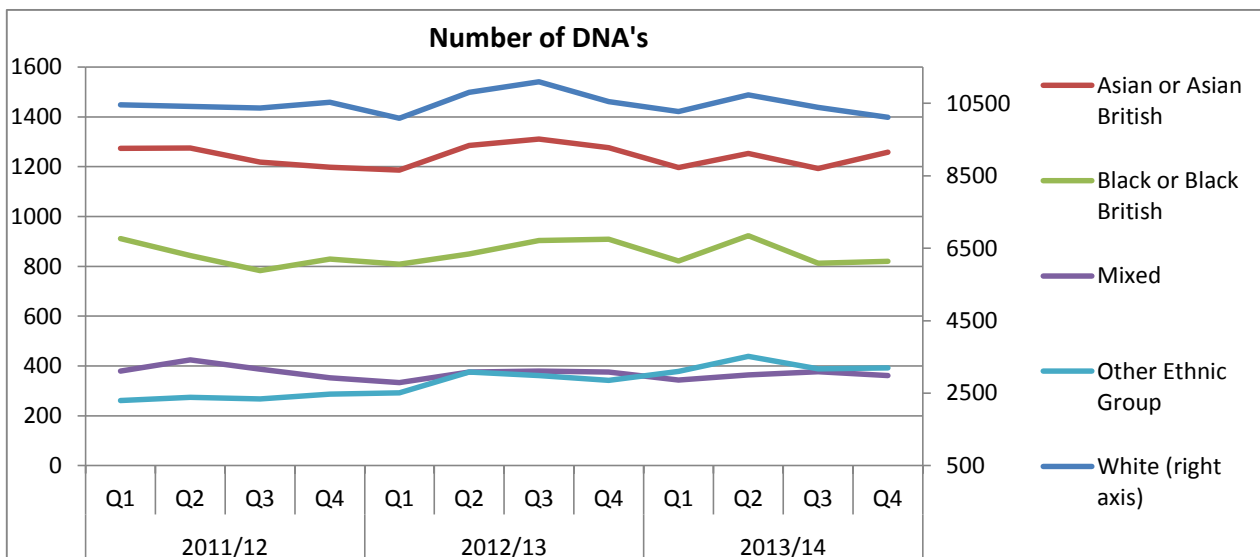
3. DNA rates per 1000 population - Black/Black British



9.0% of Did not Attend (DNA) records have no ethnicity stated. Of those with ethnicity recorded, the Black/Black British ethnic group had the highest DNA rate per 1000 population, as displayed on the chart above.

As the rate per 1000 population is calculated using the 2011 Census we are unable to provide a trend for rate per 1000 population over three years as the population we have is at a fixed point in 2011.

Instead we look at the total number of DNA's over a three year period by quarter.



As the White ethnic group is larger than the others it has been plotted on the right axis to allow for easier comparison of trends between all ethnic groups. If it was plotted on the same axis as the others the scale would be too large to see the smaller ethnic groups in any detail.

The number of DNAs has remained relatively stable over the past three years for the Black/Black British ethnic group.

The Other Ethnic Group has an increase in the number of DNAs. This may be reflective of a possible underlying increase in the Other Ethnic Group population.

Author: E. Patrickson

Date: 09.03.2015